

Datasheet for ABIN656385
anti-SEPN1 antibody (C-Term)[Go to Product page](#)

2 Images

Overview

Quantity:	400 µL
Target:	SEPN1
Binding Specificity:	AA 417-445, C-Term
Reactivity:	Human
Host:	Rabbit
Clonality:	Polyclonal
Conjugate:	This SEPN1 antibody is un-conjugated
Application:	Western Blotting (WB), Immunohistochemistry (Paraffin-embedded Sections) (IHC (p))

Product Details

Immunogen:	This SEPN1 antibody is generated from rabbits immunized with a KLH conjugated synthetic peptide between 417-445 amino acids from the C-terminal region of human SEPN1.
Clone:	RB31326
Isotype:	Ig Fraction
Purification:	This antibody is purified through a protein A column, followed by peptide affinity purification.

Target Details

Target:	SEPN1
Alternative Name:	SEPN1 (SEPN1 Products)
Background:	This gene encodes a selenoprotein, which contains a selenocysteine (Sec) residue at its active

Target Details

site. The selenocysteine is encoded by the UGA codon that normally signals translation termination. The 3' UTR of selenoprotein genes have a common stem-loop structure, the sec insertion sequence (SECIS), that is necessary for the recognition of UGA as a Sec codon rather than as a stop signal. Mutations in this gene cause the classical phenotype of multimotile disease and congenital muscular dystrophy with spinal rigidity and restrictive respiratory syndrome. Two alternatively spliced transcript variants encoding distinct isoforms have been found for this gene.

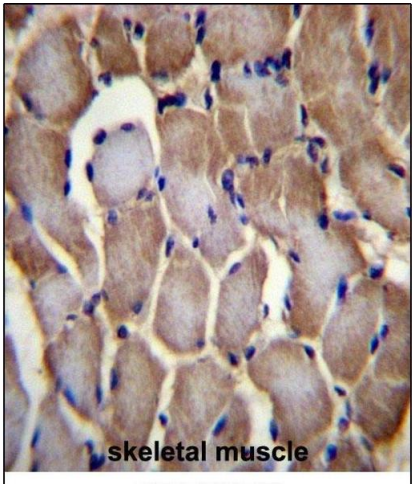
Molecular Weight:	65813
Gene ID:	57190
NCBI Accession:	NP_065184 , NP_996809
UniProt:	Q9NZV5
Pathways:	Skeletal Muscle Fiber Development

Application Details

Application Notes:	WB: 1:1000. IHC-P: 1:10~50
Restrictions:	For Research Use only

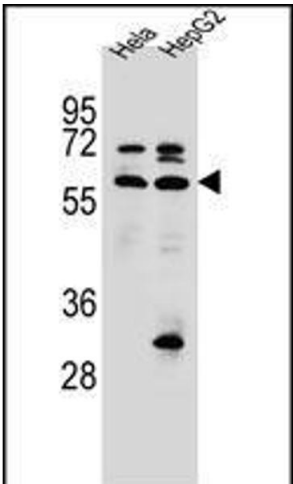
Handling

Format:	Liquid
Buffer:	Purified polyclonal antibody supplied in PBS with 0.09 % (W/V) sodium azide.
Preservative:	Sodium azide
Precaution of Use:	This product contains Sodium azide: a POISONOUS AND HAZARDOUS SUBSTANCE which should be handled by trained staff only.
Storage:	4 °C,-20 °C
Storage Comment:	SEPN1 Antibody (C-term) can be refrigerated at 2-8 °C for up to 6 months. For long term storage, place the at -20 °C.
Expiry Date:	6 months



Immunohistochemistry (Paraffin-embedded Sections)

Image 1. SEPN1 Antibody (C-term) (ABIN656385 and ABIN2845680) immunohistochemistry analysis in formalin fixed and paraffin embedded human skeletal muscle followed by peroxidase conjugation of the secondary antibody and DAB staining. This data demonstrates the use of SEPN1 Antibody (C-term) for immunohistochemistry. Clinical relevance has not been evaluated.



Western Blotting

Image 2. SEPN1 Antibody (C-term) (ABIN656385 and ABIN2845680) western blot analysis in HeLa, HepG2 cell line lysates (35 µg/lane). This demonstrates the SEPN1 antibody detected the SEPN1 protein (arrow).