

Datasheet for ABIN656386

anti-PDP antibody (AA 308-336)



[Go to Product page](#)

3 Images

1 Publication

Overview

Quantity:	400 µL
Target:	PDP
Binding Specificity:	AA 308-336
Reactivity:	Human, Rat
Host:	Rabbit
Clonality:	Polyclonal
Conjugate:	This PDP antibody is un-conjugated
Application:	Western Blotting (WB), Immunohistochemistry (Paraffin-embedded Sections) (IHC (p))

Product Details

Immunogen:	This PDP1 antibody is generated from rabbits immunized with a KLH conjugated synthetic peptide between 308-336 amino acids from the Central region of human PDP1.
Clone:	RB31327
Isotype:	Ig Fraction
Purification:	This antibody is purified through a protein A column, followed by peptide affinity purification.

Target Details

Target:	PDP
Alternative Name:	PDP1 (PDP Products)
Background:	Pyruvate dehydrogenase (E1) is one of the three components (E1, E2, and E3) of the large

Target Details

pyruvate dehydrogenase complex. Pyruvate dehydrogenase kinases catalyze phosphorylation of serine residues of E1 to inactivate the E1 component and inhibit the complex. Pyruvate dehydrogenase phosphatases catalyze the dephosphorylation and activation of the E1 component to reverse the effects of pyruvate dehydrogenase kinases. Pyruvate dehydrogenase phosphatase is a heterodimer consisting of catalytic and regulatory subunits. Two catalytic subunits have been reported, one is predominantly expressed in skeletal muscle and another one is much more abundant in the liver. The catalytic subunit, encoded by this gene, is the former, and belongs to the protein phosphatase 2C (PP2C) superfamily. Along with the pyruvate dehydrogenase complex and pyruvate dehydrogenase kinases, this enzyme is located in the mitochondrial matrix. Mutation in this gene causes pyruvate dehydrogenase phosphatase deficiency. Multiple alternatively spliced transcript variants encoding different isoforms have been identified.

Molecular Weight:	61054
Gene ID:	54704
NCBI Accession:	NP_001155251 , NP_001155252 , NP_001155253 , NP_060914
UniProt:	Q9P0J1

Application Details

Application Notes:	WB: 1:1000. WB: 1:2000. IHC-P: 1:10~50
Restrictions:	For Research Use only

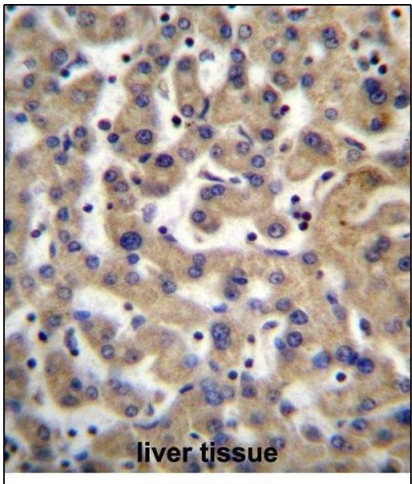
Handling

Format:	Liquid
Buffer:	Purified polyclonal antibody supplied in PBS with 0.09 % (W/V) sodium azide.
Preservative:	Sodium azide
Precaution of Use:	This product contains Sodium azide: a POISONOUS AND HAZARDOUS SUBSTANCE which should be handled by trained staff only.
Storage:	4 °C,-20 °C
Storage Comment:	PDP1 Antibody (Center) can be refrigerated at 2-8 °C for up to 6 months. For long term storage, place the at -20 °C.
Expiry Date:	6 months

Publications

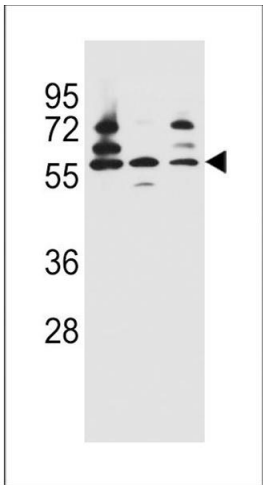
Product cited in: Shan, Kang, Elf, Xie, Gu, Aguiar, Lonning, Hitosugi, Chung, Arellano, Khoury, Shin, Khuri, Boggon, Fan: "Tyr-94 phosphorylation inhibits pyruvate dehydrogenase phosphatase 1 and promotes tumor growth." in: **The Journal of biological chemistry**, Vol. 289, Issue 31, pp. 21413-22, (2014) ([PubMed](#)).

Images



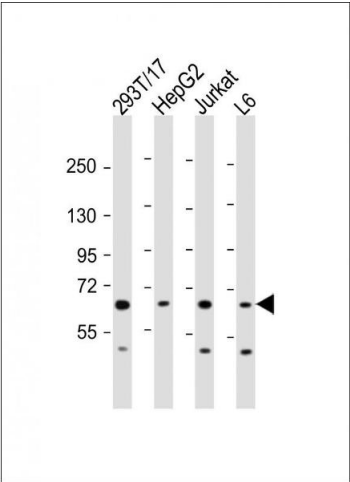
Immunohistochemistry (Paraffin-embedded Sections)

Image 1. PDP1 Antibody (Center) (ABIN656386 and ABIN2845681) immunohistochemistry analysis in formalin fixed and paraffin embedded human liver tissue followed by peroxidase conjugation of the secondary antibody and DAB staining. This data demonstrates the use of PDP1 Antibody (Center) for immunohistochemistry. Clinical relevance has not been evaluated.



Western Blotting

Image 2. PDP1 Antibody (Center) (ABIN656386 and ABIN2845681) western blot analysis in Jurkat, HepG2, 293 cell line lysates (35 µg/lane). This demonstrates the PDP1 antibody detected the PDP1 protein (arrow).



Western Blotting

Image 3. All lanes : Anti-PDP1 Antibody (Center) at 1:2000 dilution Lane 1: 293T/17 whole cell lysate Lane 2: HepG2 whole cell lysate Lane 3: Jurkat whole cell lysate Lane 4: L6 whole cell lysate Lysates/proteins at 20 µg per lane. Secondary Goat Anti-Rabbit IgG, (H+L), Peroxidase conjugated at 1/10000 dilution. Predicted band size : 61 kDa Blocking/Dilution buffer: 5 % NFDM/TBST.