

Datasheet for ABIN656389  
**anti-PPP1R42 antibody (C-Term)**[Go to Product page](#)

## 1 Image

## Overview

Quantity:	400 µL
Target:	PPP1R42
Binding Specificity:	AA 238-266, C-Term
Reactivity:	Human
Host:	Rabbit
Clonality:	Polyclonal
Conjugate:	This PPP1R42 antibody is un-conjugated
Application:	Western Blotting (WB)

## Product Details

Immunogen:	This LRRC67 antibody is generated from rabbits immunized with a KLH conjugated synthetic peptide between 238-266 amino acids from the C-terminal region of human LRRC67.
Clone:	RB31508
Isotype:	Ig Fraction
Predicted Reactivity:	Pr
Purification:	This antibody is purified through a protein A column, followed by peptide affinity purification.

## Target Details

Target:	PPP1R42
Alternative Name:	LRRC67 ( <a href="#">PPP1R42 Products</a> )

## Target Details

Molecular Weight:	35480
Gene ID:	286187
NCBI Accession:	<a href="#">NP_001013648</a>
UniProt:	<a href="#">Q7Z4L9</a>

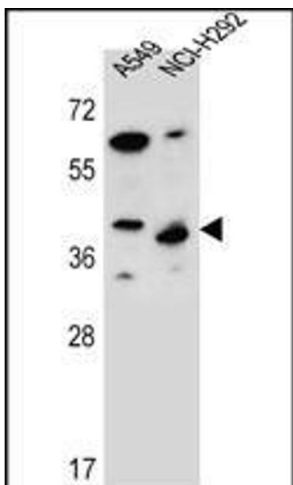
## Application Details

Application Notes:	WB: 1:1000
Restrictions:	For Research Use only

## Handling

Format:	Liquid
Buffer:	Purified polyclonal antibody supplied in PBS with 0.09 % (W/V) sodium azide.
Preservative:	Sodium azide
Precaution of Use:	This product contains Sodium azide: a POISONOUS AND HAZARDOUS SUBSTANCE which should be handled by trained staff only.
Storage:	4 °C,-20 °C
Storage Comment:	LRRC67 Antibody (C-term) can be refrigerated at 2-8 °C for up to 6 months. For long term storage, place the at -20 °C.
Expiry Date:	6 months

## Images



### Western Blotting

**Image 1.** LRRC67 Antibody (C-term) (ABIN656389 and ABIN2845683) western blot analysis in A549,NCI- cell line lysates (35 µg/lane).This demonstrates the LRRC67 antibody detected the LRRC67 protein (arrow).