



[Go to Product page](#)

Datasheet for ABIN656392  
**anti-ZFYVE1 antibody (N-Term)**

1 Image

Overview

Quantity:	400 µL
Target:	ZFYVE1
Binding Specificity:	AA 145-173, N-Term
Reactivity:	Human
Host:	Rabbit
Clonality:	Polyclonal
Conjugate:	This ZFYVE1 antibody is un-conjugated
Application:	Western Blotting (WB)

Product Details

Immunogen:	This ZFYVE1 antibody is generated from rabbits immunized with a KLH conjugated synthetic peptide between 145-173 amino acids from the N-terminal region of human ZFYVE1.
Clone:	RB32272
Isotype:	Ig Fraction
Predicted Reactivity:	M
Purification:	This antibody is purified through a protein A column, followed by peptide affinity purification.

Target Details

Target:	ZFYVE1
Alternative Name:	ZFYVE1 ( <a href="#">ZFYVE1 Products</a> )

## Target Details

---

Background:	The FYVE domain mediates the recruitment of proteins involved in membrane trafficking and cell signaling to phosphatidylinositol 3-phosphate (PtdIns(3)P)-containing membranes. This gene encodes a protein which contains two zinc-binding FYVE domains in tandem. This protein displays a predominantly Golgi, endoplasmic reticulum and vesicular distribution. Alternatively spliced transcript variants have been found for this gene, and they encode two isoforms with different sizes.
Molecular Weight:	87176
Gene ID:	53349
NCBI Accession:	<a href="#">NP_001268664</a> , <a href="#">NP_067083</a> , <a href="#">NP_848535</a>
UniProt:	<a href="#">Q9HBF4</a>

## Application Details

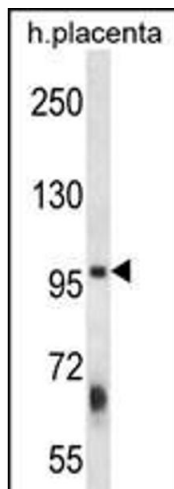
---

Application Notes:	WB: 1:1000
Restrictions:	For Research Use only

## Handling

---

Format:	Liquid
Buffer:	Purified polyclonal antibody supplied in PBS with 0.09 % (W/V) sodium azide.
Preservative:	Sodium azide
Precaution of Use:	This product contains Sodium azide: a POISONOUS AND HAZARDOUS SUBSTANCE which should be handled by trained staff only.
Storage:	4 °C, -20 °C
Storage Comment:	ZFYVE1 Antibody (N-term) can be refrigerated at 2-8 °C for up to 6 months. For long term storage, place the at -20 °C.
Expiry Date:	6 months



#### Western Blotting

**Image 1.** ZFYVE1 Antibody (N-term) (ABIN656392 and ABIN2845686) western blot analysis in human placenta tissue lysates (35 µg/lane). This demonstrates the ZFYVE1 antibody detected the ZFYVE1 protein (arrow).