

Datasheet for ABIN656398
anti-HIPK1 antibody (C-Term)[Go to Product page](#)

2 Images

Overview

Quantity:	400 µL
Target:	HIPK1
Binding Specificity:	AA 893-922, C-Term
Reactivity:	Human
Host:	Rabbit
Clonality:	Polyclonal
Conjugate:	This HIPK1 antibody is un-conjugated
Application:	Western Blotting (WB), Immunohistochemistry (Paraffin-embedded Sections) (IHC (p))

Product Details

Immunogen:	This HIPK1 antibody is generated from rabbits immunized with a KLH conjugated synthetic peptide between 893-922 amino acids from the C-terminal region of human HIPK1.
Clone:	RB09623
Isotype:	Ig Fraction
Predicted Reactivity:	M
Purification:	This antibody is purified through a protein A column, followed by peptide affinity purification.

Target Details

Target:	HIPK1
Alternative Name:	HIPK1 (HIPK1 Products)

Target Details

Background: The protein encoded by this gene belongs to the Ser/Thr family of protein kinases and HIPK subfamily. It phosphorylates homeodomain transcription factors and may also function as a co-repressor for homeodomain transcription factors. Alternative splicing results in four transcript variants encoding four distinct isoforms.

Molecular Weight: 130843

Gene ID: 204851

NCBI Accession: [NP_689909](#), [NP_852003](#), [NP_938009](#), [NP_938010](#)

UniProt: [Q86Z02](#)

Application Details

Application Notes: WB: 1:1000. IHC-P: 1:10~50

Restrictions: For Research Use only

Handling

Format: Liquid

Buffer: Purified polyclonal antibody supplied in PBS with 0.09 % (W/V) sodium azide.

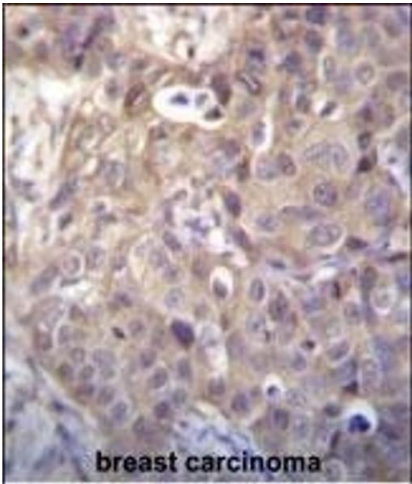
Preservative: Sodium azide

Precaution of Use: This product contains Sodium azide: a POISONOUS AND HAZARDOUS SUBSTANCE which should be handled by trained staff only.

Storage: 4 °C, -20 °C

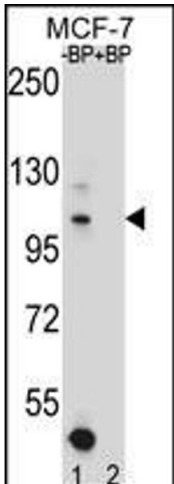
Storage Comment: HIPK1 Antibody (C-term) can be refrigerated at 2-8 °C for up to 6 months. For long term storage, place the at -20 °C.

Expiry Date: 6 months



Immunohistochemistry (Paraffin-embedded Sections)

Image 1. HIPK1 Antibody (C-term) (ABIN656398 and ABIN2845693) immunohistochemistry analysis in formalin fixed and paraffin embedded human breast carcinoma followed by peroxidase conjugation of the secondary antibody and DAB staining. This data demonstrates the use of HIPK1 Antibody (C-term) for immunohistochemistry. Clinical relevance has not been evaluated.



Western Blotting

Image 2. Western blot analysis of HIPK1 Antibody (C-term) Pab (ABIN656398 and ABIN2845693) pre-incubated without (lane 1) and with (lane 2) blocking peptide in MCF-7 cell line lysate. HIPK1 Antibody (C-term) (arrow) was detected using the purified Pab.