



[Go to Product page](#)

Datasheet for ABIN656399
anti-MINA antibody (N-Term)

2 Images

Overview

Quantity:	400 µL
Target:	MINA
Binding Specificity:	AA 1-30, N-Term
Reactivity:	Human
Host:	Rabbit
Clonality:	Polyclonal
Conjugate:	This MINA antibody is un-conjugated
Application:	Western Blotting (WB), Flow Cytometry (FACS)

Product Details

Immunogen:	This MINA antibody is generated from rabbits immunized with a KLH conjugated synthetic peptide between 1-30 amino acids from the N-terminal region of human MINA.
Clone:	RB10806
Isotype:	Ig Fraction
Purification:	This antibody is prepared by Saturated Ammonium Sulfate (SAS) precipitation followed by dialysis against PBS.

Target Details

Target:	MINA
Alternative Name:	MINA (MINA Products)

Target Details

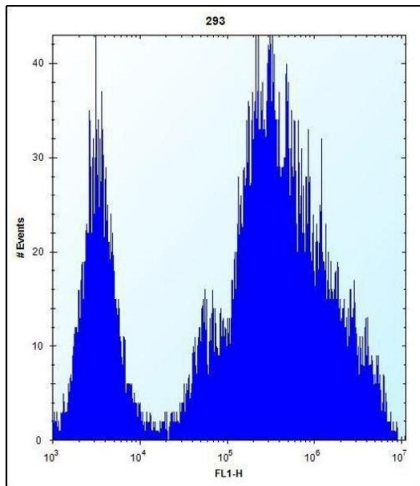
Background:	MINA is a c-Myc (MYC, MIM 190080) target gene that may play a role in cell proliferation or regulation of cell growth. (Tsuneoka et al., 2002 [PubMed 12091391], Zhang et al., 2005 [PubMed 15897898]).
Molecular Weight:	52800
Gene ID:	84864
NCBI Accession:	NP_001035998 , NP_001248758 , NP_116167 , NP_694822
UniProt:	Q8IUF8

Application Details

Application Notes:	WB: 1:1000. FC: 1:10~50
Restrictions:	For Research Use only

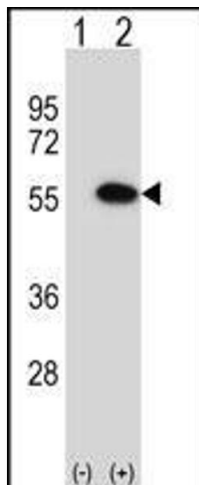
Handling

Format:	Liquid
Buffer:	Purified polyclonal antibody supplied in PBS with 0.09 % (W/V) sodium azide.
Preservative:	Sodium azide
Precaution of Use:	This product contains Sodium azide: a POISONOUS AND HAZARDOUS SUBSTANCE which should be handled by trained staff only.
Storage:	4 °C, -20 °C
Storage Comment:	MINA Antibody (N-term) can be refrigerated at 2-8 °C for up to 6 months. For long term storage, place the at -20 °C.
Expiry Date:	6 months



Flow Cytometry

Image 1. MINA Antibody (N-term) (ABIN656399 and ABIN2845694) flow cytometric analysis of 293 cells (right histogram) compared to a negative control cell (left histogram). FITC-conjugated goat-anti-rabbit secondary antibodies were used for the analysis.



Western Blotting

Image 2. Western blot analysis of MINA (arrow) using rabbit polyclonal MINA Antibody (N-term) (ABIN656399 and ABIN2845694). 293 cell lysates (2 µg/lane) either nontransfected (Lane 1) or transiently transfected (Lane 2) with the MINA gene.