



[Go to Product page](#)

Datasheet for ABIN656401

anti-STX2 antibody (AA 123-152)

3 Images

Overview

Quantity:	400 µL
Target:	STX2
Binding Specificity:	AA 123-152
Reactivity:	Human, Mouse
Host:	Rabbit
Clonality:	Polyclonal
Conjugate:	This STX2 antibody is un-conjugated
Application:	Western Blotting (WB), Immunohistochemistry (Paraffin-embedded Sections) (IHC (p))

Product Details

Immunogen:	This STX2 antibody is generated from rabbits immunized with a KLH conjugated synthetic peptide between 123-152 amino acids from the Central region of human STX2.
Clone:	RB12390
Isotype:	Ig Fraction
Purification:	This antibody is purified through a protein A column, followed by peptide affinity purification.

Target Details

Target:	STX2
Alternative Name:	STX2 (STX2 Products)
Background:	The product of this gene belongs to the syntaxin/epimorphin family of proteins. The syntaxins

Target Details

are a large protein family implicated in the targeting and fusion of intracellular transport vesicles. The product of this gene regulates epithelial-mesenchymal interactions and epithelial cell morphogenesis and activation. Alternatively spliced transcript variants encoding different isoforms have been identified.

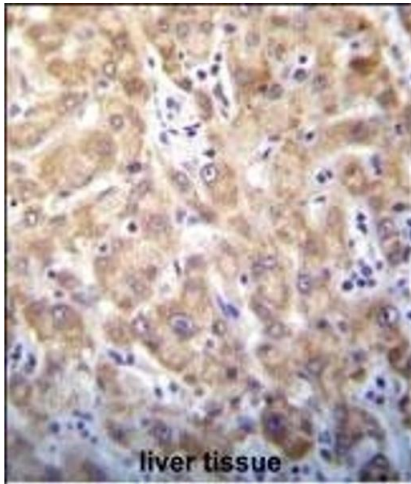
Molecular Weight:	33341
Gene ID:	2054
NCBI Accession:	NP_001971 , NP_919337
UniProt:	P32856

Application Details

Application Notes:	WB: 1:1000. WB: 1:1000. IHC-P: 1:10~50
Restrictions:	For Research Use only

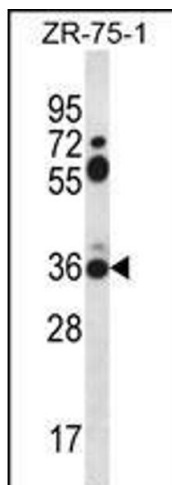
Handling

Format:	Liquid
Buffer:	Purified polyclonal antibody supplied in PBS with 0.09 % (W/V) sodium azide.
Preservative:	Sodium azide
Precaution of Use:	This product contains Sodium azide: a POISONOUS AND HAZARDOUS SUBSTANCE which should be handled by trained staff only.
Storage:	4 °C,-20 °C
Storage Comment:	STX2 Antibody (Center) can be refrigerated at 2-8 °C for up to 6 months. For long term storage, place the at -20 °C.
Expiry Date:	6 months



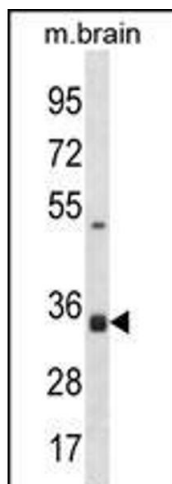
Immunohistochemistry (Paraffin-embedded Sections)

Image 1. STX2 Antibody (Center) (ABIN656401 and ABIN2845695) immunohistochemistry analysis in formalin fixed and paraffin embedded human liver tissue followed by peroxidase conjugation of the secondary antibody and DAB staining. This data demonstrates the use of STX2 Antibody (Center) for immunohistochemistry. Clinical relevance has not been evaluated.



Western Blotting

Image 2. STX2 Antibody (Center) (ABIN656401 and ABIN2845695) western blot analysis in ZR-75-1 cell line lysates (35 µg/lane). This demonstrates the STX2 antibody detected the STX2 protein (arrow).



Western Blotting

Image 3. STX2 Antibody (Center) (ABIN656401 and ABIN2845695) western blot analysis in mouse brain tissue lysates (35 µg/lane). This demonstrates the STX2 antibody detected the STX2 protein (arrow).