

Datasheet for ABIN656406  
**anti-IL-6 antibody (AA 27-55)**



[Go to Product page](#)

3 Images

## Overview

Quantity:	400 µL
Target:	IL-6 (IL6)
Binding Specificity:	AA 27-55
Reactivity:	Human
Host:	Rabbit
Clonality:	Polyclonal
Conjugate:	This IL-6 antibody is un-conjugated
Application:	Western Blotting (WB), Flow Cytometry (FACS), Immunohistochemistry (Paraffin-embedded Sections) (IHC (p))

## Product Details

Immunogen:	This IL6 antibody is generated from rabbits immunized with a KLH conjugated synthetic peptide between 27-55 amino acids from the Central region of human IL6.
Clone:	RB21414
Isotype:	Ig Fraction
Purification:	This antibody is purified through a protein A column, followed by peptide affinity purification.

## Target Details

Target:	IL-6 (IL6)
Alternative Name:	IL6 ( <a href="#">IL6 Products</a> )

## Target Details

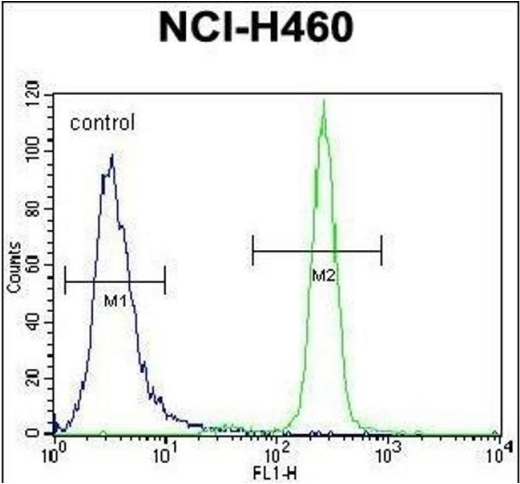
Background:	This gene encodes a cytokine that functions in inflammation and the maturation of B cells. The protein is primarily produced at sites of acute and chronic inflammation, where it is secreted into the serum and induces a transcriptional inflammatory response through interleukin 6 receptor, alpha. The functioning of this gene is implicated in a wide variety of inflammation-associated disease states, including susceptibility to diabetes mellitus and systemic juvenile rheumatoid arthritis.
Molecular Weight:	23718
Gene ID:	3569
NCBI Accession:	<a href="#">NP_000591</a>
UniProt:	<a href="#">P05231</a>
Pathways:	<a href="#">TLR Signaling</a> , <a href="#">Hormone Transport</a> , <a href="#">Negative Regulation of Hormone Secretion</a> , <a href="#">Myometrial Relaxation and Contraction</a> , <a href="#">Positive Regulation of Immune Effector Process</a> , <a href="#">Production of Molecular Mediator of Immune Response</a> , <a href="#">Regulation of Carbohydrate Metabolic Process</a> , <a href="#">Autophagy</a> , <a href="#">Cell RedoxHomeostasis</a> , <a href="#">Cancer Immune Checkpoints</a> , <a href="#">Inflammasome</a>

## Application Details

Application Notes:	WB: 1:1000. IHC-P: 1:10~50. FC: 1:10~50
Restrictions:	For Research Use only

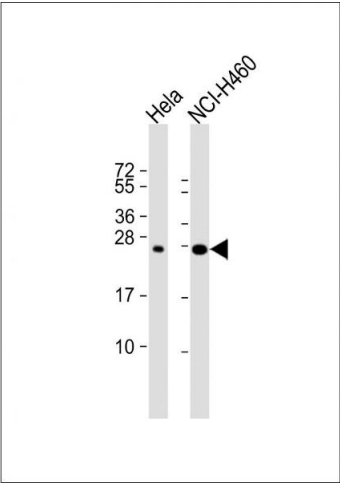
## Handling

Format:	Liquid
Buffer:	Purified polyclonal antibody supplied in PBS with 0.09 % (W/V) sodium azide.
Preservative:	Sodium azide
Precaution of Use:	This product contains Sodium azide: a POISONOUS AND HAZARDOUS SUBSTANCE which should be handled by trained staff only.
Storage:	4 °C,-20 °C
Storage Comment:	IL6 Antibody (Center) can be refrigerated at 2-8 °C for up to 6 months. For long term storage, place the at -20 °C.
Expiry Date:	6 months



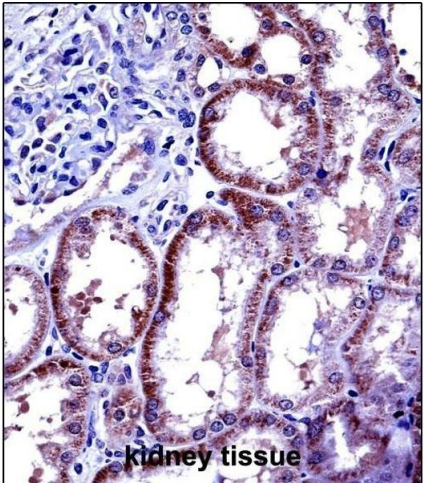
### Flow Cytometry

**Image 1.** IL6 Antibody (Center) (ABIN656406 and ABIN2845700) flow cytometric analysis of NCI- cells (right histogram) compared to a negative control cell (left histogram). FITC-conjugated goat-anti-rabbit secondary antibodies were used for the analysis.



### Western Blotting

**Image 2.** All lanes : Anti-IL6 Antibody (Center) at 1:1000 dilution Lane 1: Hela whole cell lysate Lane 2: NCI- whole cell lysate Lysates/proteins at 20 µg per lane. Secondary Goat Anti-Rabbit IgG, (H+L), Peroxidase conjugated at 1/10000 dilution. Predicted band size : 24 kDa Blocking/Dilution buffer: 5 % NFDm/TBST.



### Immunohistochemistry (Paraffin-embedded Sections)

**Image 3.** IL6 Antibody (Center) ((ABIN656406 and ABIN2845700)) immunohistochemistry analysis in formalin fixed and paraffin embedded human kidney tissue followed by peroxidase conjugation of the secondary antibody and DAB staining. This data demonstrates the use of IL6 Antibody (Center) for immunohistochemistry. Clinical relevance has not been evaluated.