



Datasheet for ABIN656407
anti-CJ057 antibody (C-Term)



[Go to Product page](#)

2 Images

Overview

Quantity:	400 µL
Target:	CJ057 (C100RF57)
Binding Specificity:	AA 96-123, C-Term
Reactivity:	Human
Host:	Rabbit
Clonality:	Polyclonal
Conjugate:	This CJ057 antibody is un-conjugated
Application:	Western Blotting (WB), Immunohistochemistry (Paraffin-embedded Sections) (IHC (p))

Product Details

Immunogen:	This CJ057 antibody is generated from rabbits immunized with a KLH conjugated synthetic peptide between 96-123 amino acids from the C-terminal region of human CJ057.
Clone:	RB22294
Isotype:	Ig Fraction
Purification:	This antibody is purified through a protein A column, followed by peptide affinity purification.

Target Details

Target:	CJ057 (C100RF57)
Alternative Name:	CJ057 (C100RF57 Products)
Background:	The function of this protein remains unknown.

Target Details

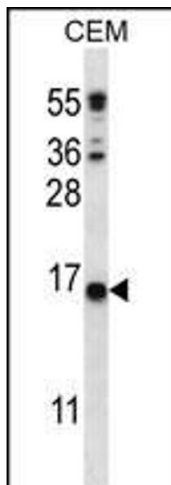
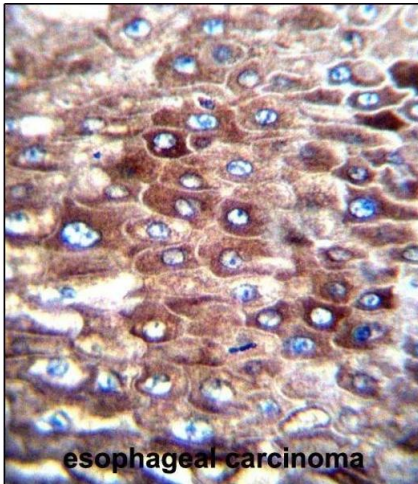
Molecular Weight:	14243
Gene ID:	80195
NCBI Accession:	NP_001257296 , NP_001257297 , NP_001257298 , NP_001257299 , NP_001257300 , NP_001257301 , NP_001257302 , NP_001257303 , NP_079401
UniProt:	Q8TBM7

Application Details

Application Notes:	WB: 1:1000. IHC-P: 1:10~50
Restrictions:	For Research Use only

Handling

Format:	Liquid
Buffer:	Purified polyclonal antibody supplied in PBS with 0.09 % (W/V) sodium azide.
Preservative:	Sodium azide
Precaution of Use:	This product contains Sodium azide: a POISONOUS AND HAZARDOUS SUBSTANCE which should be handled by trained staff only.
Storage:	4 °C, -20 °C
Storage Comment:	CJ057 Antibody (C-term) can be refrigerated at 2-8 °C for up to 6 months. For long term storage, place the at -20 °C.
Expiry Date:	6 months



Immunohistochemistry (Paraffin-embedded Sections)

Image 1. C Antibody (C-term) (ABIN656407 and ABIN2845701) immunohistochemistry analysis in formalin fixed and paraffin embedded human esophageal carcinoma followed by peroxidase conjugation of the secondary antibody and DAB staining. This data demonstrates the use of C Antibody (C-term) for immunohistochemistry. Clinical relevance has not been evaluated.

Western Blotting

Image 2. C Antibody (C-term) (ABIN656407 and ABIN2845701) western blot analysis in CEM cell line lysates (35 µg/lane). This demonstrates the C antibody detected the C protein (arrow).