



Datasheet for ABIN656408
anti-SPG7 antibody (AA 115-141)



[Go to Product page](#)

2 Images

Overview

Quantity:	400 µL
Target:	SPG7
Binding Specificity:	AA 115-141
Reactivity:	Human
Host:	Rabbit
Clonality:	Polyclonal
Conjugate:	This SPG7 antibody is un-conjugated
Application:	Western Blotting (WB), Immunohistochemistry (Paraffin-embedded Sections) (IHC (p))

Product Details

Immunogen:	This SPG7 antibody is generated from rabbits immunized with a KLH conjugated synthetic peptide between 115-141 amino acids from the Central region of human SPG7.
Clone:	RB23654
Isotype:	Ig Fraction
Purification:	This antibody is purified through a protein A column, followed by peptide affinity purification.

Target Details

Target:	SPG7
Alternative Name:	SPG7 (SPG7 Products)
Background:	This gene encodes a nuclear-encoded mitochondrial metalloprotease protein that is a member

Target Details

of the AAA (ATPases associated with a variety of cellular activities) protein family. Members of this protein family share an ATPase domain and have roles in diverse cellular processes including membrane trafficking, intracellular motility, organelle biogenesis, protein folding, and proteolysis. Two transcript variants encoding distinct isoforms have been identified for this gene. Mutations associated with this gene cause autosomal recessive spastic paraplegia 7. [provided by RefSeq].

Molecular Weight: 88235

Gene ID: 6687

NCBI Accession: [NP_003110](#), [NP_955399](#)

UniProt: [Q9UQ90](#)

Application Details

Application Notes: WB: 1:1000. IHC-P: 1:10~50

Restrictions: For Research Use only

Handling

Format: Liquid

Buffer: Purified polyclonal antibody supplied in PBS with 0.09 % (W/V) sodium azide.

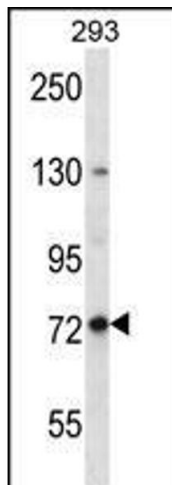
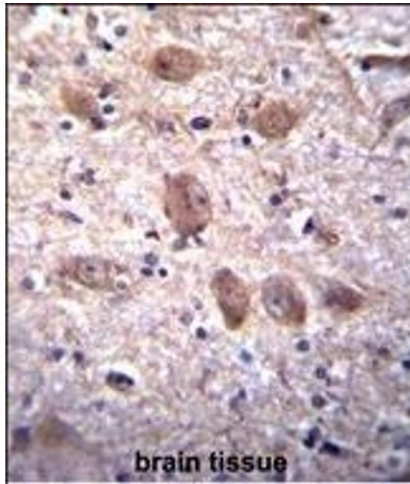
Preservative: Sodium azide

Precaution of Use: This product contains Sodium azide: a POISONOUS AND HAZARDOUS SUBSTANCE which should be handled by trained staff only.

Storage: 4 °C, -20 °C

Storage Comment: SPG7 Antibody (Center) can be refrigerated at 2-8 °C for up to 6 months. For long term storage, place the at -20 °C.

Expiry Date: 6 months



Immunohistochemistry (Paraffin-embedded Sections)

Image 1. SPG7 Antibody (Center) (ABIN656408 and ABIN2845702) immunohistochemistry analysis in formalin fixed and paraffin embedded human brain tissue followed by peroxidase conjugation of the secondary antibody and DAB staining. This data demonstrates the use of SPG7 Antibody (Center) for immunohistochemistry. Clinical relevance has not been evaluated.

Western Blotting

Image 2. SPG7 Antibody (Center) (ABIN656408 and ABIN2845702) western blot analysis in 293 cell line lysates (35 µg/lane). This demonstrates the SPG7 antibody detected the SPG7 protein (arrow).