



[Go to Product page](#)

Datasheet for ABIN656421  
**anti-TLX1 antibody (AA 163-191)**

1 Image

Overview

Quantity:	400 µL
Target:	TLX1
Binding Specificity:	AA 163-191
Reactivity:	Mouse
Host:	Rabbit
Clonality:	Polyclonal
Conjugate:	This TLX1 antibody is un-conjugated
Application:	Western Blotting (WB)

Product Details

Immunogen:	This TLX1 antibody is generated from rabbits immunized with a KLH conjugated synthetic peptide between 163-191 amino acids from the Central region of human TLX1.
Clone:	RB31060
Isotype:	Ig Fraction
Predicted Reactivity:	C
Purification:	This antibody is purified through a protein A column, followed by peptide affinity purification.

Target Details

Target:	TLX1
Alternative Name:	TLX1 ( <a href="#">TLX1 Products</a> )

## Target Details

---

Background:	This gene encodes a nuclear transcription factor that belongs to the NK-linked or NK-like (NKL) subfamily of homeobox genes. The encoded protein is required for normal development of the spleen during embryogenesis. This protein is also involved in specification of neuronal cell fates. Ectopic expression of this gene due to chromosomal translocations is associated with certain T-cell acute lymphoblastic leukemias. Alternate splicing results in multiple transcript variants.
Molecular Weight:	34365
Gene ID:	3195
NCBI Accession:	<a href="#">NP_001182446</a> , <a href="#">NP_005512</a>
UniProt:	<a href="#">P31314</a>

## Application Details

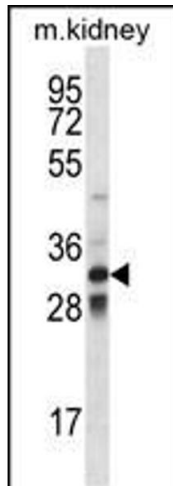
---

Application Notes:	WB: 1:1000
Restrictions:	For Research Use only

## Handling

---

Format:	Liquid
Buffer:	Purified polyclonal antibody supplied in PBS with 0.09 % (W/V) sodium azide.
Preservative:	Sodium azide
Precaution of Use:	This product contains Sodium azide: a POISONOUS AND HAZARDOUS SUBSTANCE which should be handled by trained staff only.
Storage:	4 °C, -20 °C
Storage Comment:	TLX1 Antibody (Center) can be refrigerated at 2-8 °C for up to 6 months. For long term storage, place the at -20 °C.
Expiry Date:	6 months



### Western Blotting

**Image 1.** TLX1 Antibody (Center) (ABIN656421 and ABIN2845712) western blot analysis in mouse kidney tissue lysates (35 µg/lane). This demonstrates the TLX1 antibody detected the TLX1 protein (arrow).