

Datasheet for ABIN656424  
**anti-DNAJB6 antibody (AA 218-247)**[Go to Product page](#)

## 3 Images

## Overview

Quantity:	400 µL
Target:	DNAJB6
Binding Specificity:	AA 218-247
Reactivity:	Human
Host:	Rabbit
Clonality:	Polyclonal
Conjugate:	This DNAJB6 antibody is un-conjugated
Application:	Western Blotting (WB), Flow Cytometry (FACS), Immunohistochemistry (Paraffin-embedded Sections) (IHC (p))

## Product Details

Immunogen:	This DNAJB6 antibody is generated from rabbits immunized with a KLH conjugated synthetic peptide between 218-247 amino acids from the Central region of human DNAJB6.
Clone:	RB31102
Isotype:	Ig Fraction
Purification:	This antibody is purified through a protein A column, followed by peptide affinity purification.

## Target Details

Target:	DNAJB6
Alternative Name:	DNAJB6 ( <a href="#">DNAJB6 Products</a> )

## Target Details

**Background:** This gene encodes a member of the DNAJ protein family. DNAJ family members are characterized by a highly conserved amino acid stretch called the 'J-domain' and function as one of the two major classes of molecular chaperones involved in a wide range of cellular events, such as protein folding and oligomeric protein complex assembly. This family member may also play a role in polyglutamine aggregation in specific neurons. Alternative splicing of this gene results in multiple transcript variants, however, not all variants have been fully described.

**Molecular Weight:** 36087

**Gene ID:** 10049

**NCBI Accession:** [NP\\_005485](#), [NP\\_490647](#)

**UniProt:** [O75190](#)

## Application Details

**Application Notes:** WB: 1:1000. IHC-P: 1:10~50. FC: 1:10~50

**Restrictions:** For Research Use only

## Handling

**Format:** Liquid

**Buffer:** Purified polyclonal antibody supplied in PBS with 0.09 % (W/V) sodium azide.

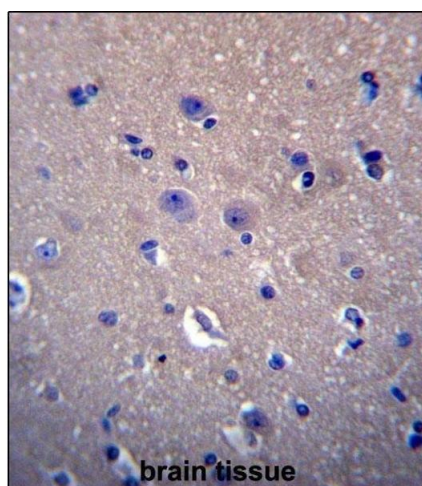
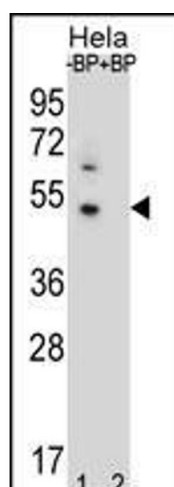
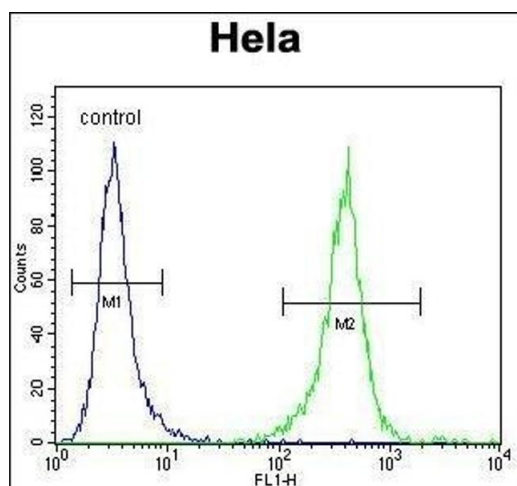
**Preservative:** Sodium azide

**Precaution of Use:** This product contains Sodium azide: a POISONOUS AND HAZARDOUS SUBSTANCE which should be handled by trained staff only.

**Storage:** 4 °C, -20 °C

**Storage Comment:** DNAJB6 Antibody (Center) can be refrigerated at 2-8 °C for up to 6 months. For long term storage, place the at -20 °C.

**Expiry Date:** 6 months



### Flow Cytometry

**Image 1.** DNAJB6 Antibody (Center) (ABIN656424 and ABIN2845716) flow cytometric analysis of HeLa cells (right histogram) compared to a negative control cell (left histogram). FITC-conjugated goat-anti-rabbit secondary antibodies were used for the analysis.

### Western Blotting

**Image 2.** Western blot analysis of DNAJB6 Antibody (Center) Pab (ABIN656424 and ABIN2845716) pre-incubated without (lane 1) and with (lane 2) blocking peptide in HeLa cell line lysate. DNAJB6 Antibody (Center) (arrow) was detected using the purified Pab.

### Immunohistochemistry (Paraffin-embedded Sections)

**Image 3.** DNAJB6 Antibody (Center) (ABIN656424 and ABIN2845716) immunohistochemistry analysis in formalin fixed and paraffin embedded human brain tissue followed by peroxidase conjugation of the secondary antibody and DAB staining. This data demonstrates the use of DNAJB6 Antibody (Center) for immunohistochemistry. Clinical relevance has not been evaluated.