

Datasheet for ABIN656428
anti-PSTPIP1 antibody (N-Term)

2 Images

[Go to Product page](#)

Overview

Quantity:	400 µL
Target:	PSTPIP1
Binding Specificity:	AA 89-118, N-Term
Reactivity:	Human
Host:	Rabbit
Clonality:	Polyclonal
Conjugate:	This PSTPIP1 antibody is un-conjugated
Application:	Western Blotting (WB), Flow Cytometry (FACS)

Product Details

Immunogen:	This PSTPIP1 antibody is generated from rabbits immunized with a KLH conjugated synthetic peptide between 89-118 amino acids from the N-terminal region of human PSTPIP1.
Clone:	RB31127
Isotype:	Ig Fraction
Predicted Reactivity:	M
Purification:	This antibody is purified through a protein A column, followed by peptide affinity purification.

Target Details

Target:	PSTPIP1
Alternative Name:	PSTPIP1 (PSTPIP1 Products)

Target Details

Background: The protein encoded by this gene binds to the cytoplasmic tail of CD2, an effector of T cell activation and adhesion, negatively affecting CD2-triggered T cell activation. The encoded protein appears to be a scaffold protein and a regulator of the actin cytoskeleton. It has also been shown to bind ABL1, PTPN18, WAS, CD2AP, and PTPN12. Mutations in this gene are a cause of PAPA syndrome.

Molecular Weight: 47591

Gene ID: 9051

NCBI Accession: [NP_003969](#)

UniProt: [O43586](#)

Application Details

Application Notes: WB: 1:1000. FC: 1:10~50

Restrictions: For Research Use only

Handling

Format: Liquid

Buffer: Purified polyclonal antibody supplied in PBS with 0.09 % (W/V) sodium azide.

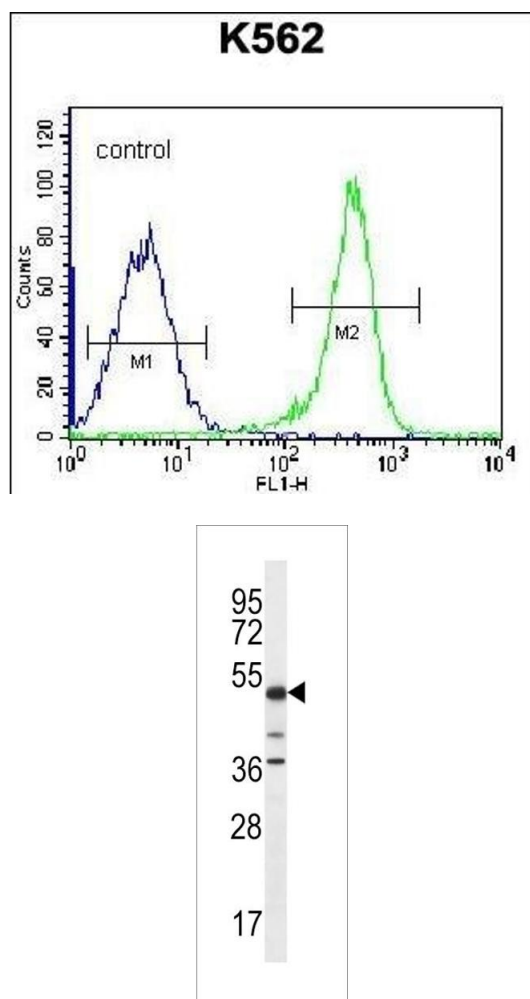
Preservative: Sodium azide

Precaution of Use: This product contains Sodium azide: a POISONOUS AND HAZARDOUS SUBSTANCE which should be handled by trained staff only.

Storage: 4 °C,-20 °C

Storage Comment: PSTPIP1 Antibody (N-term) can be refrigerated at 2-8 °C for up to 6 months. For long term storage, place the at -20 °C.

Expiry Date: 6 months



Flow Cytometry

Image 1. PSTPIP1 Antibody (N-term) (ABIN656428 and ABIN2845719) flow cytometric analysis of K562 cells (right histogram) compared to a negative control cell (left histogram). FITC-conjugated goat-anti-rabbit secondary antibodies were used for the analysis.

Western Blotting

Image 2. PSTPIP1 Antibody (N-term) (ABIN656428 and ABIN2845719) western blot analysis in K562 cell line lysates (35 μ g/lane). This demonstrates the PSTPIP1 antibody detected the PSTPIP1 protein (arrow).