

Datasheet for ABIN656431
anti-CCT8 antibody (C-Term)[Go to Product page](#)

3 Images

2 Publications

Overview

Quantity:	400 µL
Target:	CCT8
Binding Specificity:	AA 519-548, C-Term
Reactivity:	Human
Host:	Rabbit
Clonality:	Polyclonal
Conjugate:	This CCT8 antibody is un-conjugated
Application:	Western Blotting (WB), Flow Cytometry (FACS), Immunohistochemistry (Paraffin-embedded Sections) (IHC (p))

Product Details

Immunogen:	This CCT8 antibody is generated from rabbits immunized with a KLH conjugated synthetic peptide between 519-548 amino acids from the C-terminal region of human CCT8.
Clone:	RB31130
Isotype:	Ig Fraction
Predicted Reactivity:	Pr, M
Purification:	This antibody is purified through a protein A column, followed by peptide affinity purification.

Target Details

Target:	CCT8
---------	------

Target Details

Alternative Name:	CCT8 (CCT8 Products)
Background:	Molecular chaperone, CCT8 assists the folding of proteins upon ATP hydrolysis. As part of the BBS/CCT complex may play a role in the assembly of BBSome, a complex involved in ciliogenesis regulating transports vesicles to the cilia. Known to play a role, in vitro, in the folding of actin and tubulin.
Molecular Weight:	59621
Gene ID:	10694
NCBI Accession:	NP_006576
UniProt:	P50990

Application Details

Application Notes:	WB: 1:1000. IHC-P: 1:10~50. FC: 1:10~50
Restrictions:	For Research Use only

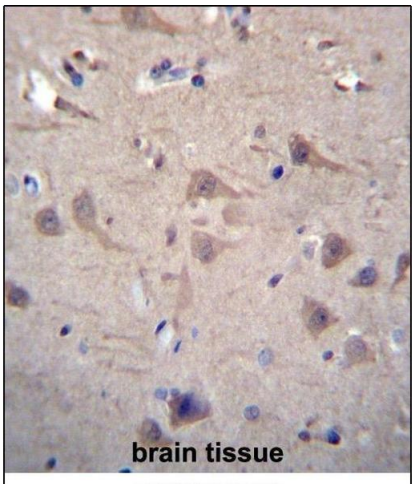
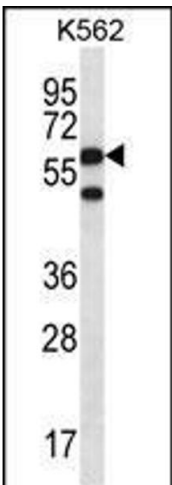
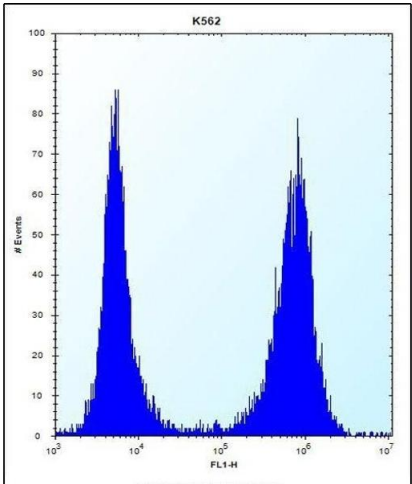
Handling

Format:	Liquid
Buffer:	Purified polyclonal antibody supplied in PBS with 0.09 % (W/V) sodium azide.
Preservative:	Sodium azide
Precaution of Use:	This product contains Sodium azide: a POISONOUS AND HAZARDOUS SUBSTANCE which should be handled by trained staff only.
Storage:	4 °C,-20 °C
Storage Comment:	CCT8 Antibody (C-term) can be refrigerated at 2-8 °C for up to 6 months. For long term storage, place the at -20 °C.
Expiry Date:	6 months

Publications

Product cited in:	Davidson, Robinson, Rollinson, Pickering-Brown, Xiao, Robertson, Mann: "Immunohistochemical detection of C9orf72 protein in frontotemporal lobar degeneration and motor neurone disease: patterns of immunostaining and an evaluation of commercial antibodies." in: Amyotrophic lateral sclerosis & frontotemporal degeneration , Vol. 19, Issue 1-2, pp. 102-111, (2018) (
-------------------	---

Images



Flow Cytometry

Image 1. CCT8 Antibody (C-term) (ABIN656431 and ABIN2845721) flow cytometric analysis of K562 cells (right histogram) compared to a negative control cell (left histogram). FITC-conjugated donkey-anti-rabbit secondary antibodies were used for the analysis.

Western Blotting

Image 2. CCT8 Antibody (C-term) (ABIN656431 and ABIN2845721) western blot analysis in K562 cell line lysates (35 µg/lane). This demonstrates the CCT8 antibody detected the CCT8 protein (arrow).

Immunohistochemistry (Paraffin-embedded Sections)

Image 3. CCT8 Antibody (C-term) (ABIN656431 and ABIN2845721) immunohistochemistry analysis in formalin fixed and paraffin embedded human brain tissue followed by peroxidase conjugation of the secondary antibody and DAB staining. This data demonstrates the use of CCT8 Antibody (C-term) for immunohistochemistry. Clinical relevance has not been evaluated.