

Datasheet for ABIN656432
anti-MAN2A2 antibody (AA 767-796)[Go to Product page](#)

3 Images

Overview

Quantity:	400 µL
Target:	MAN2A2
Binding Specificity:	AA 767-796
Reactivity:	Human, Mouse
Host:	Rabbit
Clonality:	Polyclonal
Conjugate:	This MAN2A2 antibody is un-conjugated
Application:	Western Blotting (WB), Flow Cytometry (FACS), Immunohistochemistry (Paraffin-embedded Sections) (IHC (p))

Product Details

Immunogen:	This MAN2A2 antibody is generated from rabbits immunized with a KLH conjugated synthetic peptide between 767-796 amino acids from the Central region of human MAN2A2.
Clone:	RB31132
Isotype:	Ig Fraction
Purification:	This antibody is purified through a protein A column, followed by peptide affinity purification.

Target Details

Target:	MAN2A2
Alternative Name:	MAN2A2 (MAN2A2 Products)

Target Details

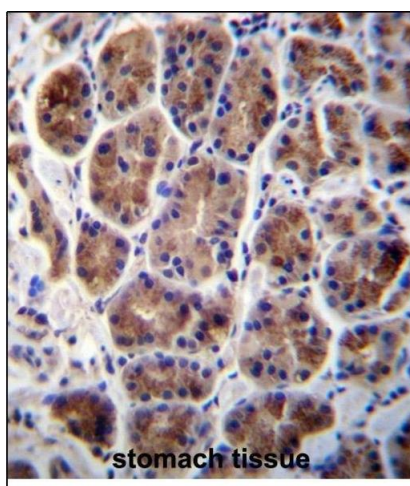
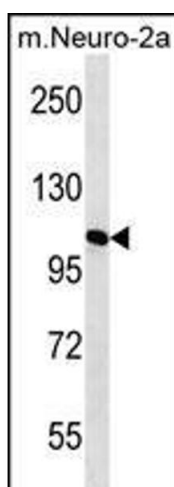
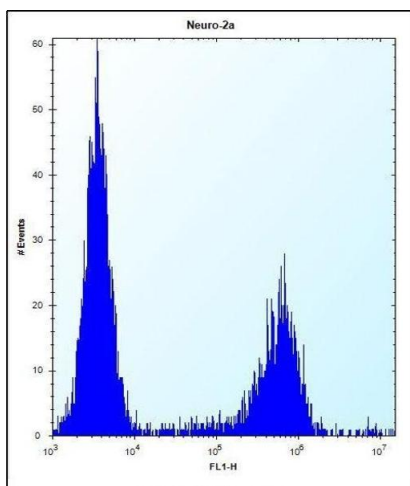
Background:	MAN2A2 catalyzes the first committed step in the biosynthesis of complex N-glycans. It controls conversion of high mannose to complex N-glycans, the final hydrolytic step in the N-glycan maturation pathway.
Molecular Weight:	130539
Gene ID:	4122
NCBI Accession:	NP_006113
UniProt:	P49641

Application Details

Application Notes:	WB: 1:1000. IHC-P: 1:10~50. FC: 1:10~50
Restrictions:	For Research Use only

Handling

Format:	Liquid
Buffer:	Purified polyclonal antibody supplied in PBS with 0.09 % (W/V) sodium azide.
Preservative:	Sodium azide
Precaution of Use:	This product contains Sodium azide: a POISONOUS AND HAZARDOUS SUBSTANCE which should be handled by trained staff only.
Storage:	4 °C, -20 °C
Storage Comment:	MAN2A2 Antibody (Center) can be refrigerated at 2-8 °C for up to 6 months. For long term storage, place the at -20 °C.
Expiry Date:	6 months



Flow Cytometry

Image 1. N2A2 Antibody (Center) (ABIN656432 and ABIN2845722) flow cytometric analysis of Neuro-2a cells (right histogram) compared to a negative control cell (left histogram). FITC-conjugated donkey-anti-rabbit secondary antibodies were used for the analysis.

Western Blotting

Image 2. N2A2 Antibody (Center) (ABIN656432 and ABIN2845722) western blot analysis in mouse Neuro-2a cell line lysates (35 μ g/lane). This demonstrates the N2A2 antibody detected the N2A2 protein (arrow).

Immunohistochemistry (Paraffin-embedded Sections)

Image 3. N2A2 Antibody (Center) (ABIN656432 and ABIN2845722) immunohistochemistry analysis in forlin fixed and paraffin embedded hun stoch tissue followed by peroxidase conjugation of the secondary antibody and DAB staining. This data demonstrates the use of N2A2 Antibody (Center) for immunohistochemistry. Clinical relevance has not been evaluated.