

Datasheet for ABIN656439

anti-METTL11B antibody (N-Term)[Go to Product page](#)**1** Image

Overview

Quantity:	400 µL
Target:	METTL11B (C10RF184)
Binding Specificity:	AA 14-42, N-Term
Reactivity:	Mouse
Host:	Rabbit
Clonality:	Polyclonal
Conjugate:	This METTL11B antibody is un-conjugated
Application:	Western Blotting (WB)

Product Details

Immunogen:	This METTL11B antibody is generated from rabbits immunized with a KLH conjugated synthetic peptide between 14-42 amino acids from the N-terminal region of human METTL11B.
Clone:	RB31225
Isotype:	Ig Fraction
Predicted Reactivity:	Rat
Purification:	This antibody is purified through a protein A column, followed by peptide affinity purification.

Target Details

Target:	METTL11B (C10RF184)
Alternative Name:	METTL11B (C10RF184 Products)

Target Details

Background: METTL11B is alpha-N-methyltransferase that methylates the N-terminus of target proteins containing the N-terminal motif [Ala/Pro/Ser]-Pro-Lys when the initiator Met is cleaved. Specifically catalyzes mono-, di- or tri-methylation of exposed alpha-amino group of Ala, Pro or Ser residue in the [Ala/Pro/Ser]-Pro-Lys motif (By similarity).

Molecular Weight: 32400

Gene ID: 149281

NCBI Accession: [NP_001129579](#)

UniProt: [Q5VYY1](#)

Application Details

Application Notes: WB: 1:1000

Restrictions: For Research Use only

Handling

Format: Liquid

Buffer: Purified polyclonal antibody supplied in PBS with 0.09 % (W/V) sodium azide.

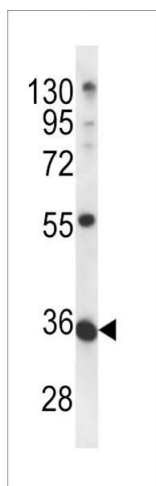
Preservative: Sodium azide

Precaution of Use: This product contains Sodium azide: a POISONOUS AND HAZARDOUS SUBSTANCE which should be handled by trained staff only.

Storage: 4 °C, -20 °C

Storage Comment: METTL11B Antibody (N-term) can be refrigerated at 2-8 °C for up to 6 months. For long term storage, place the at -20 °C.

Expiry Date: 6 months



Western Blotting

Image 1. METTL11B Antibody (N-term) (ABIN656439 and ABIN2845725) western blot analysis in mouse bladder tissue lysates (35 µg/lane). This demonstrates the METTL11B antibody detected the METTL11B protein (arrow).