



[Go to Product page](#)

Datasheet for ABIN656444

anti-CDRT15L2 antibody (C-Term)

1 Image

Overview

Quantity:	400 µL
Target:	CDRT15L2
Binding Specificity:	AA 215-243, C-Term
Reactivity:	Human
Host:	Rabbit
Clonality:	Polyclonal
Conjugate:	This CDRT15L2 antibody is un-conjugated
Application:	Western Blotting (WB)

Product Details

Immunogen:	This CDRT15L2 antibody is generated from rabbits immunized with a KLH conjugated synthetic peptide between 215-243 amino acids from the C-terminal region of human CDRT15L2.
Clone:	RB31248
Isotype:	Ig Fraction
Purification:	This antibody is purified through a protein A column, followed by peptide affinity purification.

Target Details

Target:	CDRT15L2
Alternative Name:	CDRT15L2 (CDRT15L2 Products)
Background:	The function of this protein remains unknown.

Target Details

Gene ID: 256223

NCBI Accession: [NP_001177719](#)

UniProt: [A8MXV6](#)

Application Details

Application Notes: WB: 1:1000

Restrictions: For Research Use only

Handling

Format: Liquid

Buffer: Purified polyclonal antibody supplied in PBS with 0.09 % (W/V) sodium azide.

Preservative: Sodium azide

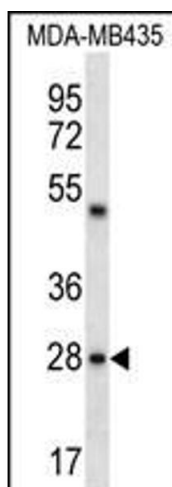
Precaution of Use: This product contains Sodium azide: a POISONOUS AND HAZARDOUS SUBSTANCE which should be handled by trained staff only.

Storage: 4 °C, -20 °C

Storage Comment: CDRT15L2 Antibody (C-term) can be refrigerated at 2-8 °C for up to 6 months. For long term storage, place the at -20 °C.

Expiry Date: 6 months

Images



Western Blotting

Image 1. CDRT15L2 Antibody (C-term) (ABIN656444 and ABIN2845729) western blot analysis in MDA-M cell line lysates (35 µg/lane). This demonstrates the CDRT15L2 antibody detected the CDRT15L2 protein (arrow).