

Datasheet for ABIN656448  
**anti-SCP2 antibody (N-Term)**

2 Images



[Go to Product page](#)

## Overview

Quantity:	400 µL
Target:	SCP2
Binding Specificity:	AA 14-43, N-Term
Reactivity:	Human
Host:	Rabbit
Clonality:	Polyclonal
Conjugate:	This SCP2 antibody is un-conjugated
Application:	Western Blotting (WB), Immunohistochemistry (Paraffin-embedded Sections) (IHC (p))

## Product Details

Immunogen:	This SCP2 antibody is generated from rabbits immunized with a KLH conjugated synthetic peptide between 14-43 amino acids from the N-terminal region of human SCP2.
Clone:	RB31279
Isotype:	Ig Fraction
Purification:	This antibody is purified through a protein A column, followed by peptide affinity purification.

## Target Details

Target:	SCP2
Alternative Name:	SCP2 ( <a href="#">SCP2 Products</a> )
Background:	This gene encodes two proteins: sterol carrier protein X (SCPx) and sterol carrier protein 2

## Target Details

(SCP2), as a result of transcription initiation from 2 independently regulated promoters. The transcript initiated from the proximal promoter encodes the longer SCPx protein, and the transcript initiated from the distal promoter encodes the shorter SCP2 protein, with the 2 proteins sharing a common C-terminus. Evidence suggests that the SCPx protein is a peroxisome-associated thiolase that is involved in the oxidation of branched chain fatty acids, while the SCP2 protein is thought to be an intracellular lipid transfer protein. This gene is highly expressed in organs involved in lipid metabolism, and may play a role in Zellweger syndrome, in which cells are deficient in peroxisomes and have impaired bile acid synthesis. Alternative splicing of this gene produces multiple transcript variants, some encoding different isoforms.

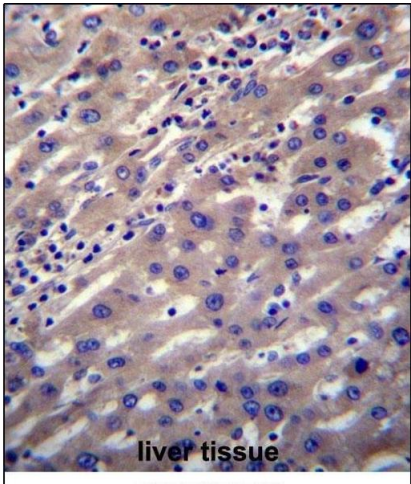
Molecular Weight:	58994
Gene ID:	6342
NCBI Accession:	<a href="#">NP_001007099</a> , <a href="#">NP_001007100</a> , <a href="#">NP_001007101</a> , <a href="#">NP_001007251</a> , <a href="#">NP_001180528</a> , <a href="#">NP_001180546</a> , <a href="#">NP_002970</a>
UniProt:	<a href="#">P22307</a>
Pathways:	<a href="#">C21-Steroid Hormone Metabolic Process</a> , <a href="#">Monocarboxylic Acid Catabolic Process</a>

## Application Details

Application Notes:	WB: 1:1000. IHC-P: 1:10~50
Restrictions:	For Research Use only

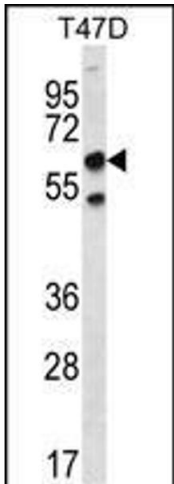
## Handling

Format:	Liquid
Buffer:	Purified polyclonal antibody supplied in PBS with 0.09 % (W/V) sodium azide.
Preservative:	Sodium azide
Precaution of Use:	This product contains Sodium azide: a POISONOUS AND HAZARDOUS SUBSTANCE which should be handled by trained staff only.
Storage:	4 °C,-20 °C
Storage Comment:	SCP2 Antibody (N-term) can be refrigerated at 2-8 °C for up to 6 months. For long term storage, place the at -20 °C.
Expiry Date:	6 months



**Immunohistochemistry (Paraffin-embedded Sections)**

**Image 1.** SCP2 Antibody (N-term) (ABIN656448 and ABIN2845733) immunohistochemistry analysis in formalin fixed and paraffin embedded human liver tissue followed by peroxidase conjugation of the secondary antibody and DAB staining. This data demonstrates the use of SCP2 Antibody (N-term) for immunohistochemistry. Clinical relevance has not been evaluated.



**Western Blotting**

**Image 2.** SCP2 Antibody (N-term) (ABIN656448 and ABIN2845733) western blot analysis in T47D cell line lysates (35 µg/lane). This demonstrates the SCP2 antibody detected the SCP2 protein (arrow).