

Datasheet for ABIN656451
anti-DUS1L antibody (C-Term)



[Go to Product page](#)

2 Images

Overview

Quantity:	400 µL
Target:	DUS1L
Binding Specificity:	AA 321-349, C-Term
Reactivity:	Human
Host:	Rabbit
Clonality:	Polyclonal
Conjugate:	This DUS1L antibody is un-conjugated
Application:	Western Blotting (WB), Immunohistochemistry (Paraffin-embedded Sections) (IHC (p))

Product Details

Immunogen:	This DUS1L antibody is generated from rabbits immunized with a KLH conjugated synthetic peptide between 321-349 amino acids from the C-terminal region of human DUS1L.
Clone:	RB31482
Isotype:	Ig Fraction
Purification:	This antibody is purified through a protein A column, followed by peptide affinity purification.

Target Details

Target:	DUS1L
Alternative Name:	DUS1L (DUS1L Products)
Background:	DUS1L catalyzes the synthesis of dihydrouridine, a modified base found in the D-loop of most

Target Details

tRNAs (By similarity).

Molecular Weight: 53230

Gene ID: 64118

NCBI Accession: [NP_071439](#)

UniProt: [Q6P1R4](#)

Application Details

Application Notes: WB: 1:1000. IHC-P: 1:10~50

Restrictions: For Research Use only

Handling

Format: Liquid

Buffer: Purified polyclonal antibody supplied in PBS with 0.09 % (W/V) sodium azide.

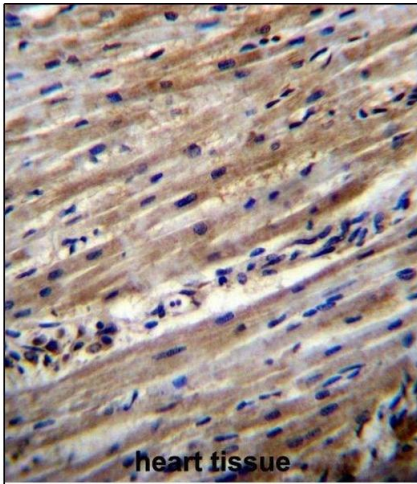
Preservative: Sodium azide

Precaution of Use: This product contains Sodium azide: a POISONOUS AND HAZARDOUS SUBSTANCE which should be handled by trained staff only.

Storage: 4 °C,-20 °C

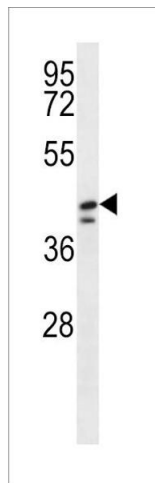
Storage Comment: DUS1L Antibody (C-term) can be refrigerated at 2-8 °C for up to 6 months. For long term storage, place the at -20 °C.

Expiry Date: 6 months



Immunohistochemistry (Paraffin-embedded Sections)

Image 1. DUS1L Antibody (C-term) (ABIN656451 and ABIN2845736) immunohistochemistry analysis in formalin fixed and paraffin embedded human heart tissue followed by peroxidase conjugation of the secondary antibody and DAB staining. This data demonstrates the use of DUS1L Antibody (C-term) for immunohistochemistry. Clinical relevance has not been evaluated.



Western Blotting

Image 2. DUS1L Antibody (C-term) (ABIN656451 and ABIN2845736) western blot analysis in HepG2, NCI, NCI-WiDr, HeLa, cell line lysates (35 µg/lane). This demonstrates the DUS1L antibody detected the DUS1L protein (arrow).