

Datasheet for ABIN656453

anti-WDR86 antibody (C-Term)

2 Images

[Go to Product page](#)

Overview

Quantity:	400 µL
Target:	WDR86
Binding Specificity:	AA 286-316, C-Term
Reactivity:	Human
Host:	Rabbit
Clonality:	Polyclonal
Conjugate:	This WDR86 antibody is un-conjugated
Application:	Western Blotting (WB), Immunohistochemistry (Paraffin-embedded Sections) (IHC (p))

Product Details

Immunogen:	This WDR86 antibody is generated from rabbits immunized with a KLH conjugated synthetic peptide between 286-316 amino acids from the C-terminal region of human WDR86.
Clone:	RB31490
Isotype:	Ig Fraction
Purification:	This antibody is purified through a protein A column, followed by peptide affinity purification.

Target Details

Target:	WDR86
Alternative Name:	WDR86 (WDR86 Products)
Background:	The function of this protein remains unknown.

Target Details

Molecular Weight:	40731
Gene ID:	349136
NCBI Accession:	NP_938026
UniProt:	Q86T14

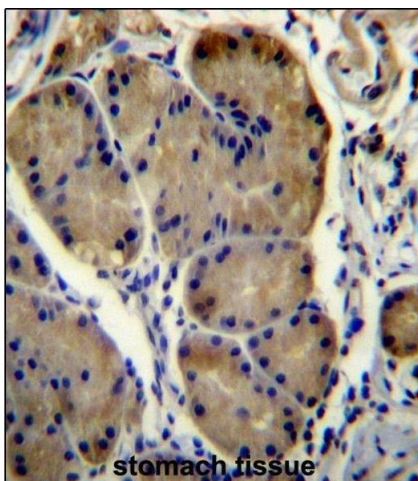
Application Details

Application Notes:	WB: 1:1000. IHC-P: 1:10~50
Restrictions:	For Research Use only

Handling

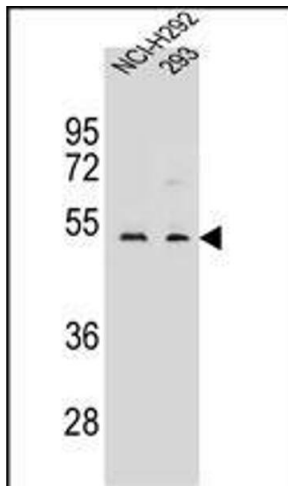
Format:	Liquid
Buffer:	Purified polyclonal antibody supplied in PBS with 0.09 % (W/V) sodium azide.
Preservative:	Sodium azide
Precaution of Use:	This product contains Sodium azide: a POISONOUS AND HAZARDOUS SUBSTANCE which should be handled by trained staff only.
Storage:	4 °C, -20 °C
Storage Comment:	WDR86 Antibody (C-term) can be refrigerated at 2-8 °C for up to 6 months. For long term storage, place the at -20 °C.
Expiry Date:	6 months

Images



Immunohistochemistry (Paraffin-embedded Sections)

Image 1. WDR86 Antibody (C-term) (ABIN656453 and ABIN2845737) immunohistochemistry analysis in formalin fixed and paraffin embedded human stomach tissue followed by peroxidase conjugation of the secondary antibody and DAB staining. This data demonstrates the use of WDR86 Antibody (C-term) for immunohistochemistry. Clinical relevance has not been evaluated.



Western Blotting

Image 2. WDR86 Antibody (C-term) (ABIN656453 and ABIN2845737) western blot analysis in NCI-293 cell line lysates (35 µg/lane). This demonstrates the WDR86 antibody detected the WDR86 protein (arrow).