

Datasheet for ABIN656456  
**anti-WDR3 antibody (N-Term)**

## 2 Images

[Go to Product page](#)

## Overview

Quantity:	400 µL
Target:	WDR3
Binding Specificity:	AA 208-236, N-Term
Reactivity:	Human
Host:	Rabbit
Clonality:	Polyclonal
Conjugate:	This WDR3 antibody is un-conjugated
Application:	Western Blotting (WB), Flow Cytometry (FACS)

## Product Details

Immunogen:	This WDR3 antibody is generated from rabbits immunized with a KLH conjugated synthetic peptide between 208-236 amino acids from the N-terminal region of human WDR3.
Clone:	RB31529
Isotype:	Ig Fraction
Purification:	This antibody is purified through a protein A column, followed by peptide affinity purification.

## Target Details

Target:	WDR3
Alternative Name:	WDR3 ( <a href="#">WDR3 Products</a> )
Background:	This gene encodes a nuclear protein containing 10 WD repeats. WD repeats are approximately

## Target Details

30- to 40-amino acid domains containing several conserved residues, which usually include a trp-asp at the C-terminal end. Proteins belonging to the WD repeat family are involved in a variety of cellular processes, including cell cycle progression, signal transduction, apoptosis, and gene regulation.

Molecular Weight: 106099

Gene ID: 10885

NCBI Accession: [NP\\_006775](#)

UniProt: [Q9UNX4](#)

## Application Details

Application Notes: WB: 1:1000. FC: 1:10~50

Restrictions: For Research Use only

## Handling

Format: Liquid

Buffer: Purified polyclonal antibody supplied in PBS with 0.09 % (W/V) sodium azide.

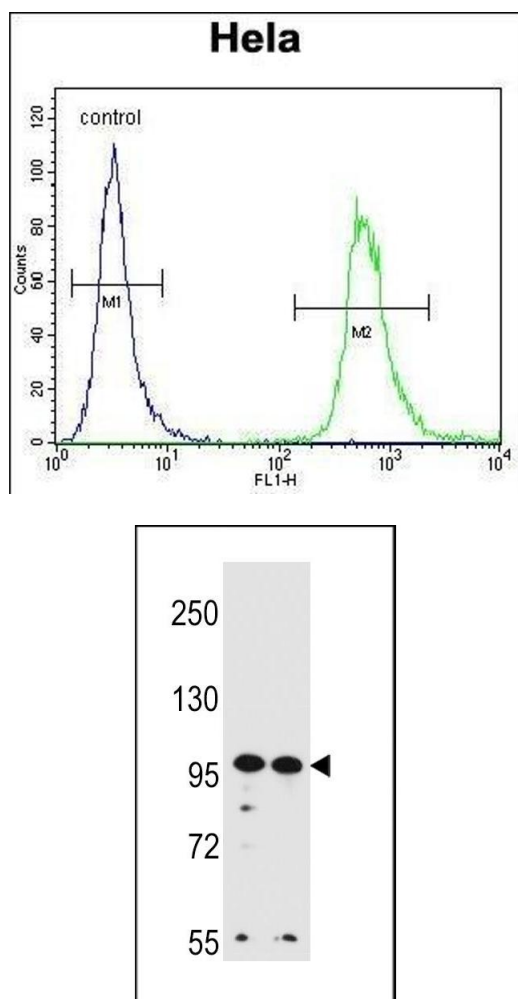
Preservative: Sodium azide

Precaution of Use: This product contains Sodium azide: a POISONOUS AND HAZARDOUS SUBSTANCE which should be handled by trained staff only.

Storage: 4 °C, -20 °C

Storage Comment: WDR3 Antibody (N-term) can be refrigerated at 2-8 °C for up to 6 months. For long term storage, place the at -20 °C.

Expiry Date: 6 months



### Flow Cytometry

**Image 1.** WDR3 Antibody (N-term) (ABIN656456 and ABIN2845740) flow cytometric analysis of Hela cells (right histogram) compared to a negative control cell (left histogram). FITC-conjugated goat-anti-rabbit secondary antibodies were used for the analysis.

### Western Blotting

**Image 2.** WDR3 Antibody (N-term) (ABIN656456 and ABIN2845740) western blot analysis in Hela, K562 cell line lysates (35  $\mu$ g/lane). This demonstrates the WDR3 antibody detected the WDR3 protein (arrow).