



[Go to Product page](#)

Datasheet for ABIN656459
anti-LRRC28 antibody (C-Term)

2 Images

Overview

Quantity:	400 µL
Target:	LRRC28
Binding Specificity:	AA 314-342, C-Term
Reactivity:	Human, Mouse
Host:	Rabbit
Clonality:	Polyclonal
Application:	Western Blotting (WB), Immunohistochemistry (Paraffin-embedded Sections) (IHC (p))

Product Details

Immunogen:	This LRRC28 antibody is generated from rabbits immunized with a KLH conjugated synthetic peptide between 314-342 amino acids from the C-terminal region of human LRRC28.
Clone:	RB31532
Isotype:	Ig Fraction
Predicted Reactivity:	B
Purification:	This antibody is purified through a protein A column, followed by peptide affinity purification.

Target Details

Target:	LRRC28
Alternative Name:	LRRC28 (LRRC28 Products)
Background:	LRRC28 contains 11 LRR (leucine-rich) repeats. The function of the LRRC28 protein is not

Target Details

known.

Molecular Weight: 41912

Gene ID: 123355

NCBI Accession: [NP_653199](#)

UniProt: [Q86X40](#)

Application Details

Application Notes: WB: 1:1000. IHC-P: 1:10~50

Restrictions: For Research Use only

Handling

Format: Liquid

Buffer: Purified polyclonal antibody supplied in PBS with 0.09 % (W/V) sodium azide.

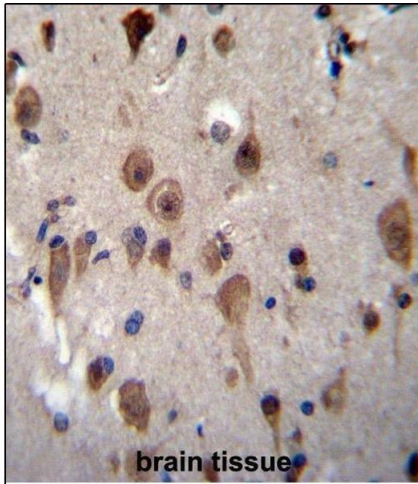
Preservative: Sodium azide

Precaution of Use: This product contains Sodium azide: a POISONOUS AND HAZARDOUS SUBSTANCE which should be handled by trained staff only.

Storage: 4 °C,-20 °C

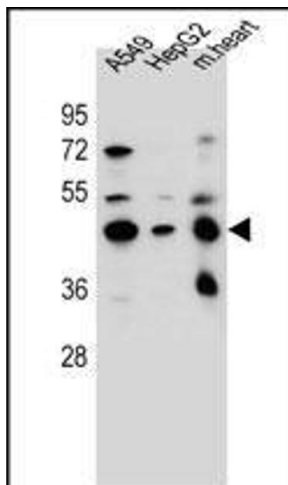
Storage Comment: LRRC28 Antibody (C-term) can be refrigerated at 2-8 °C for up to 6 months. For long term storage, place the at -20 °C.

Expiry Date: 6 months



Immunohistochemistry (Paraffin-embedded Sections)

Image 1. LRRRC28 Antibody (C-term) (ABIN656459 and ABIN2845743) immunohistochemistry analysis in formalin fixed and paraffin embedded human brain tissue followed by peroxidase conjugation of the secondary antibody and DAB staining. This data demonstrates the use of LRRRC28 Antibody (C-term) for immunohistochemistry. Clinical relevance has not been evaluated.



Western Blotting

Image 2. LRRRC28 Antibody (C-term) (ABIN656459 and ABIN2845743) western blot analysis in A549, HepG2 cell line and mouse heart tissue lysates (35 µg/lane). This demonstrates the LRRRC28 antibody detected the LRRRC28 protein (arrow).