

Datasheet for ABIN656460
anti-PROX2 antibody (C-Term)

2 Images

[Go to Product page](#)

Overview

Quantity:	400 µL
Target:	PROX2
Binding Specificity:	AA 511-539, C-Term
Reactivity:	Human
Host:	Rabbit
Clonality:	Polyclonal
Application:	Western Blotting (WB), Immunohistochemistry (Paraffin-embedded Sections) (IHC (p))

Product Details

Immunogen:	This PROX2 antibody is generated from rabbits immunized with a KLH conjugated synthetic peptide between 511-539 amino acids from the C-terminal region of human PROX2.
Clone:	RB31544
Isotype:	Ig Fraction
Purification:	This antibody is purified through a protein A column, followed by peptide affinity purification.

Target Details

Target:	PROX2
Alternative Name:	PROX2 (PROX2 Products)
Background:	PROX2 is a transcription regulator. Does not seem to be essential for embryonic development and postnatal survival (By similarity).

Target Details

Molecular Weight:	65586
Gene ID:	283571
NCBI Accession:	NP_001073877 , NP_001229936
UniProt:	Q3B8N5

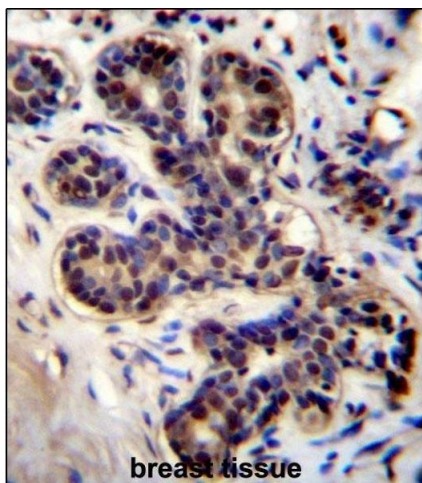
Application Details

Application Notes:	WB: 1:1000. IHC-P: 1:10~50
Restrictions:	For Research Use only

Handling

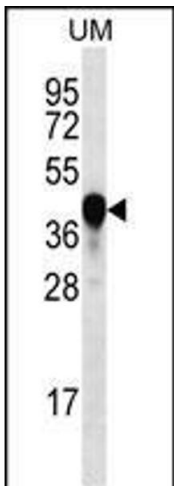
Format:	Liquid
Buffer:	Purified polyclonal antibody supplied in PBS with 0.09 % (W/V) sodium azide.
Preservative:	Sodium azide
Precaution of Use:	This product contains Sodium azide: a POISONOUS AND HAZARDOUS SUBSTANCE which should be handled by trained staff only.
Storage:	4 °C, -20 °C
Storage Comment:	PROX2 Antibody (C-term) can be refrigerated at 2-8 °C for up to 6 months. For long term storage, place the at -20 °C.
Expiry Date:	6 months

Images



Immunohistochemistry (Paraffin-embedded Sections)

Image 1. PROX2 Antibody (C-term) (ABIN656460 and ABIN2845744) immunohistochemistry analysis in formalin fixed and paraffin embedded human breast tissue followed by peroxidase conjugation of the secondary antibody and DAB staining. This data demonstrates the use of PROX2 Antibody (C-term) for immunohistochemistry. Clinical relevance has not been evaluated.



Western Blotting

Image 2. PROX2 Antibody (C-term) (ABIN656460 and ABIN2845744) western blot analysis in uterus tumor cell line lysates (35 µg/lane). This demonstrates the PROX2 antibody detected the PROX2 protein (arrow).