

Datasheet for ABIN656461
anti-LIPM antibody (C-Term)

2 Images

[Go to Product page](#)

Overview

Quantity:	400 µL
Target:	LIPM
Binding Specificity:	AA 318-346, C-Term
Reactivity:	Human
Host:	Rabbit
Clonality:	Polyclonal
Application:	Western Blotting (WB), Immunohistochemistry (Paraffin-embedded Sections) (IHC (p))

Product Details

Immunogen:	This LIPM antibody is generated from rabbits immunized with a KLH conjugated synthetic peptide between 318-346 amino acids from the C-terminal region of human LIPM.
Clone:	RB31546
Isotype:	Ig Fraction
Purification:	This antibody is purified through a protein A column, followed by peptide affinity purification.

Target Details

Target:	LIPM
Alternative Name:	LIPM (LIPM Products)
Background:	LIPM plays a highly specific role in the last step of keratinocyte differentiation. May have an essential function in lipid metabolism of the most differentiated epidermal layers.

Target Details

Molecular Weight:	48233
Gene ID:	340654
NCBI Accession:	NP_001121687
UniProt:	Q5VYY2

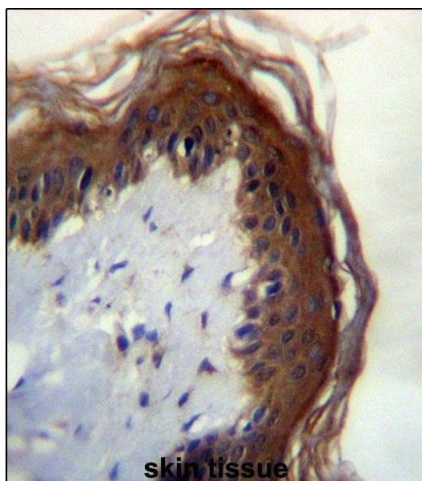
Application Details

Application Notes:	WB: 1:1000. IHC-P: 1:10~50
Restrictions:	For Research Use only

Handling

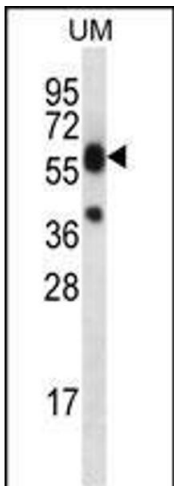
Format:	Liquid
Buffer:	Purified polyclonal antibody supplied in PBS with 0.09 % (W/V) sodium azide.
Preservative:	Sodium azide
Precaution of Use:	This product contains Sodium azide: a POISONOUS AND HAZARDOUS SUBSTANCE which should be handled by trained staff only.
Storage:	4 °C,-20 °C
Storage Comment:	LIPM Antibody (C-term) can be refrigerated at 2-8 °C for up to 6 months. For long term storage, place the at -20 °C.
Expiry Date:	6 months

Images



Immunohistochemistry (Paraffin-embedded Sections)

Image 1. LI Antibdy (C-term) (ABIN656461 and ABIN2845745) immunohistochemistry analysis in formalin fixed and paraffin embedded human skin tissue followed by peroxidase conjugation of the secondary antibody and DAB staining. This data demonstrates the use of LI Antibdy (C-term) for immunohistochemistry. Clinical relevance has not been evaluated.



Western Blotting

Image 2. LI Antibody (C-term) (ABIN656461 and ABIN2845745) western blot analysis in uterus tumor cell line lysates (35 µg/lane). This demonstrates the LI antibody detected the LI protein (arrow).