



[Go to Product page](#)

Datasheet for ABIN656469

## anti-CDRT15P2 antibody (AA 134-162)

### 1 Image

#### Overview

Quantity:	400 µL
Target:	CDRT15P2
Binding Specificity:	AA 134-162
Reactivity:	Human
Host:	Rabbit
Clonality:	Polyclonal
Application:	Western Blotting (WB)

#### Product Details

Immunogen:	This CDRT15L1 antibody is generated from rabbits immunized with a KLH conjugated synthetic peptide between 134-162 amino acids from the Central region of human CDRT15L1.
Clone:	RB32015
Isotype:	Ig Fraction
Purification:	This antibody is purified through a protein A column, followed by peptide affinity purification.

#### Target Details

Target:	CDRT15P2
Alternative Name:	CDRT15L1 ( <a href="#">CDRT15P2 Products</a> )
Background:	The function of this protein remains unknown.
Gene ID:	256223

## Target Details

NCBI Accession: [NP\\_001177719](#)

UniProt: [A8MXV6](#)

## Application Details

Application Notes: WB: 1:1000

Restrictions: For Research Use only

## Handling

Format: Liquid

Buffer: Purified polyclonal antibody supplied in PBS with 0.09 % (W/V) sodium azide.

Preservative: Sodium azide

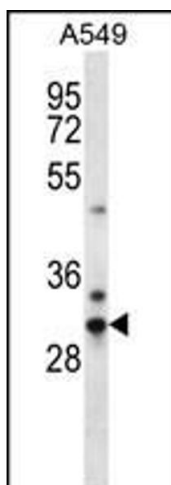
Precaution of Use: This product contains Sodium azide: a POISONOUS AND HAZARDOUS SUBSTANCE which should be handled by trained staff only.

Storage: 4 °C, -20 °C

Storage Comment: CDRT15L1 Antibody (Center) can be refrigerated at 2-8 °C for up to 6 months. For long term storage, place the at -20 °C.

Expiry Date: 6 months

## Images



### Western Blotting

**Image 1.** CDRT15L1 Antibody (Center) (ABIN656469 and ABIN2845750) western blot analysis in A549 cell line lysates (35 µg/lane). This demonstrates the CDRT15L1 antibody detected the CDRT15L1 protein (arrow).