

Datasheet for ABIN656472

anti-FAP antibody[Go to Product page](#)**1** Image**1** Publication

Overview

Quantity:	400 µL
Target:	FAP
Reactivity:	Human
Host:	Rabbit
Clonality:	Polyclonal
Application:	Western Blotting (WB)

Product Details

Immunogen:	This FAP antibody is generated from rabbits immunized with the protein of human FAP.
Clone:	RB07288
Isotype:	Ig Fraction
Purification:	This antibody is purified through a protein A column, followed by dialysis against PBS.

Target Details

Target:	FAP
Alternative Name:	FAP (FAP Products)
Background:	The protein encoded by this gene is a homodimeric integral membrane gelatinase belonging to the serine protease family. It is selectively expressed in reactive stromal fibroblasts of epithelial cancers, granulation tissue of healing wounds, and malignant cells of bone and soft tissue sarcomas. This protein is thought to be involved in the control of fibroblast growth or epithelial-mesenchymal interactions during development, tissue repair, and epithelial carcinogenesis.

Target Details

Molecular Weight:	87713
Gene ID:	2191
NCBI Accession:	NP_004451
UniProt:	Q12884
Pathways:	Tube Formation

Application Details

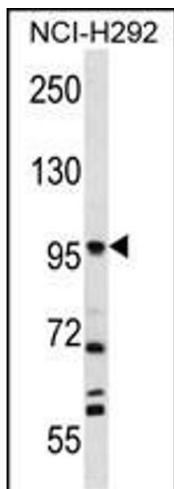
Application Notes:	WB: 1:1000
Restrictions:	For Research Use only

Handling

Format:	Liquid
Buffer:	Purified monoclonal antibody supplied in PBS with 0.09 % (W/V) sodium azide.
Preservative:	Sodium azide
Precaution of Use:	This product contains Sodium azide: a POISONOUS AND HAZARDOUS SUBSTANCE which should be handled by trained staff only.
Storage:	4 °C,-20 °C
Storage Comment:	His6-FAP Antibody can be refrigerated at 2-8 °C for up to 6 months. For long term storage, place the at -20 °C.
Expiry Date:	6 months

Publications

Product cited in:	Wu, Ma, Shan, Zhou, Li: "High expression of matrix metalloproteinases 16 is associated with the aggressive malignant behavior and poor survival outcome in colorectal carcinoma." in: Scientific reports , Vol. 7, pp. 46531, (2017) (PubMed).
	Shen, Wang, Yu, Zhang, Qin: "MMP16 promotes tumor metastasis and indicates poor prognosis in hepatocellular carcinoma." in: Oncotarget , Vol. 8, Issue 42, pp. 72197-72204, (2017) (PubMed).



Western Blotting

Image 1. F Antibody 12541a western blot analysis in NCI-cell line lysates (35 µg/lane). This demonstrates the F antibody detected the F protein (arrow).