

Datasheet for ABIN656476  
**anti-Stim2 antibody (N-Term)**

## 2 Images

[Go to Product page](#)

## Overview

Quantity:	400 µL
Target:	Stim2
Binding Specificity:	AA 98-127, N-Term
Reactivity:	Human
Host:	Rabbit
Clonality:	Polyclonal
Conjugate:	This Stim2 antibody is un-conjugated
Application:	Western Blotting (WB), Immunohistochemistry (Paraffin-embedded Sections) (IHC (p))

## Product Details

Immunogen:	This STIM2 antibody is generated from rabbits immunized with a KLH conjugated synthetic peptide between 98-127 amino acids from the N-terminal region of human STIM2.
Clone:	RB19223
Isotype:	Ig Fraction
Purification:	This antibody is purified through a protein A column, followed by peptide affinity purification.

## Target Details

Target:	Stim2
Alternative Name:	STIM2 ( <a href="#">Stim2 Products</a> )
Background:	This gene is a member of the stromal interaction molecule (STIM) family and likely arose, along

## Target Details

with related family member STIM1, from a common ancestral gene. The encoded protein functions to regulate calcium concentrations in the cytosol and endoplasmic reticulum, and is involved in the activation of plasma membrane Orai Ca(2+) entry channels. This gene initiates translation from a non-AUG (UUG) start site. A signal peptide is cleaved from the resulting protein. Multiple transcript variants result from alternative splicing.

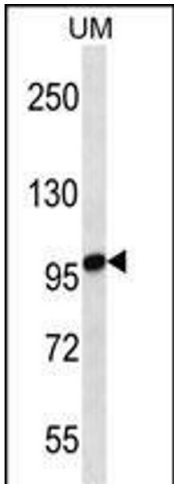
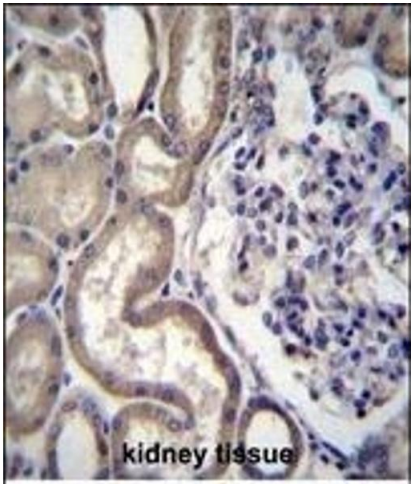
Molecular Weight:	83971
Gene ID:	57620
NCBI Accession:	<a href="#">NP_001162588</a> , <a href="#">NP_001162589</a> , <a href="#">NP_065911</a>
UniProt:	<a href="#">Q9P246</a>
Pathways:	<a href="#">TCR Signaling</a> , <a href="#">BCR Signaling</a>

## Application Details

Application Notes:	WB: 1:1000. IHC-P: 1:10~50
Restrictions:	For Research Use only

## Handling

Format:	Liquid
Buffer:	Purified polyclonal antibody supplied in PBS with 0.09 % (W/V) sodium azide.
Preservative:	Sodium azide
Precaution of Use:	This product contains Sodium azide: a POISONOUS AND HAZARDOUS SUBSTANCE which should be handled by trained staff only.
Storage:	4 °C, -20 °C
Storage Comment:	STIM2 Antibody (N-term) can be refrigerated at 2-8 °C for up to 6 months. For long term storage, place the at -20 °C.
Expiry Date:	6 months



**Immunohistochemistry (Paraffin-embedded Sections)**

**Image 1.** STIM2 Antibody (N-term) (ABIN656476 and ABIN2845756) immunohistochemistry analysis in formalin fixed and paraffin embedded human kidney tissue followed by peroxidase conjugation of the secondary antibody and DAB staining. This data demonstrates the use of STIM2 Antibody (N-term) for immunohistochemistry. Clinical relevance has not been evaluated.

**Western Blotting**

**Image 2.** STIM2 Antibody (N-term) (ABIN656476 and ABIN2845756) western blot analysis in uterus tumor cell line lysates (35 µg/lane). This demonstrates the STIM2 antibody detected the STIM2 protein (arrow).