

Datasheet for ABIN656477
anti-Calpain 6 antibody (AA 390-419)

2 Images

[Go to Product page](#)

Overview

Quantity:	400 µL
Target:	Calpain 6 (CAPN6)
Binding Specificity:	AA 390-419
Reactivity:	Human
Host:	Rabbit
Clonality:	Polyclonal
Conjugate:	This Calpain 6 antibody is un-conjugated
Application:	Western Blotting (WB), Immunohistochemistry (Paraffin-embedded Sections) (IHC (p))

Product Details

Immunogen:	This CAPN6 antibody is generated from rabbits immunized with a KLH conjugated synthetic peptide between 390-419 amino acids from the Central region of human CAPN6.
Clone:	RB19561
Isotype:	Ig Fraction
Predicted Reactivity:	M, Rat
Purification:	This antibody is purified through a protein A column, followed by peptide affinity purification.

Target Details

Target:	Calpain 6 (CAPN6)
Alternative Name:	CAPN6 (CAPN6 Products)

Target Details

Background: Calpains are ubiquitous, well-conserved family of calcium-dependent, cysteine proteases. The calpain proteins are heterodimers consisting of an invariant small subunit and variable large subunits. The large subunit possesses a cysteine protease domain, and both subunits possess calcium-binding domains. Calpains have been implicated in neurodegenerative processes, as their activation can be triggered by calcium influx and oxidative stress. The protein encoded by this gene is highly expressed in the placenta. Its C-terminal region lacks any homology to the calmodulin-like domain of other calpains. The protein lacks critical active site residues and thus is suggested to be proteolytically inactive. The protein may play a role in tumor formation by inhibiting apoptosis and promoting angiogenesis.

Molecular Weight: 74576

Gene ID: 827

NCBI Accession: [NP_055104](#)

UniProt: [Q9Y6Q1](#)

Application Details

Application Notes: WB: 1:1000. IHC-P: 1:10~50

Restrictions: For Research Use only

Handling

Format: Liquid

Buffer: Purified polyclonal antibody supplied in PBS with 0.09 % (W/V) sodium azide.

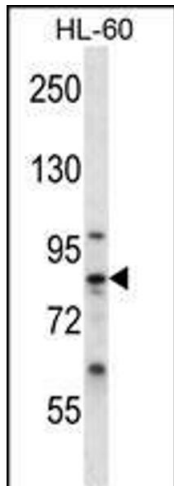
Preservative: Sodium azide

Precaution of Use: This product contains Sodium azide: a POISONOUS AND HAZARDOUS SUBSTANCE which should be handled by trained staff only.

Storage: 4 °C, -20 °C

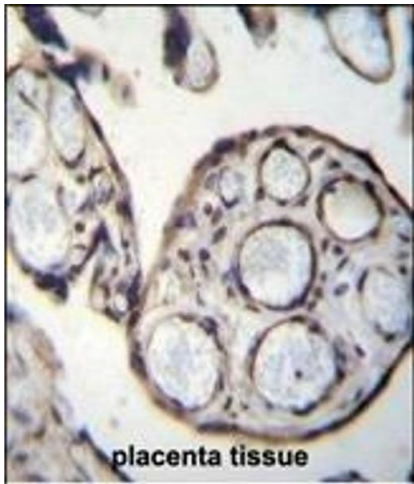
Storage Comment: CAPN6 Antibody (Center) can be refrigerated at 2-8 °C for up to 6 months. For long term storage, place the at -20 °C.

Expiry Date: 6 months



Western Blotting

Image 1. CN6 Antibody (Center) 12546c western blot analysis in HL-60 cell line lysates (35 µg/lane). This demonstrates the CN6 antibody detected the CN6 protein (arrow).



Immunohistochemistry (Paraffin-embedded Sections)

Image 2. CN6 Antibody (Center) 12546c immunohistochemistry analysis in formalin fixed and paraffin embedded human placenta tissue followed by peroxidase conjugation of the secondary antibody and DAB staining. This data demonstrates the use of CN6 Antibody (Center) for immunohistochemistry. Clinical relevance has not been evaluated.