

Datasheet for ABIN656484  
**anti-GDF15 antibody (N-Term)**

## 3 Images

[Go to Product page](#)

## Overview

Quantity:	400 µL
Target:	GDF15
Binding Specificity:	AA 51-79, N-Term
Reactivity:	Human
Host:	Rabbit
Clonality:	Polyclonal
Application:	Western Blotting (WB), Flow Cytometry (FACS), Immunohistochemistry (Paraffin-embedded Sections) (IHC (p))

## Product Details

Immunogen:	This GDF15 antibody is generated from rabbits immunized with a KLH conjugated synthetic peptide between 51-79 amino acids from the N-terminal region of human GDF15.
Clone:	RB30209
Isotype:	Ig Fraction
Purification:	This antibody is purified through a protein A column, followed by peptide affinity purification.

## Target Details

Target:	GDF15
Alternative Name:	GDF15 ( <a href="#">GDF15 Products</a> )
Background:	Bone morphogenetic proteins (e.g., BMP9, MIM 605120) are members of the transforming growth factor-beta (see TGFB1, MIM 190180) superfamily and regulate tissue differentiation

## Target Details

and maintenance. They are synthesized as precursor molecules that are processed at a dibasic cleavage site to release C-terminal domains containing a characteristic motif of 7 conserved cysteines in the mature protein.

Molecular Weight: 34140

NCBI Accession: [NP\\_004855](#)

UniProt: [Q99988](#)

Pathways: [SARS-CoV-2 Protein Interactome](#)

## Application Details

Application Notes: WB: 1:1000. IHC-P: 1:10~50. FC: 1:10~50

Restrictions: For Research Use only

## Handling

Format: Liquid

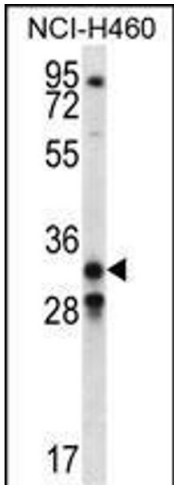
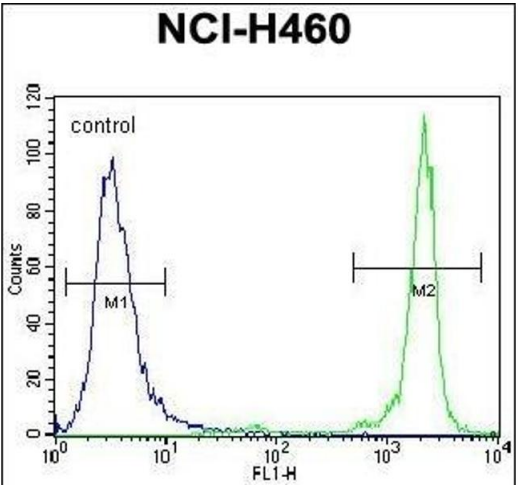
Buffer: Purified polyclonal antibody supplied in PBS with 0.09 % (W/V) sodium azide.

Preservative: Sodium azide

Precaution of Use: This product contains Sodium azide: a POISONOUS AND HAZARDOUS SUBSTANCE which should be handled by trained staff only.

Storage: 4 °C, -20 °C

Expiry Date: 6 months



### Flow Cytometry

**Image 1.** GDF15 Antibody (N-term) (ABIN656484 and ABIN2845763) flow cytometric analysis of NCI- cells (right histogram) compared to a negative control cell (left histogram).FITC-conjugated goat-anti-rabbit secondary antibodies were used for the analysis.

### Western Blotting

**Image 2.** GDF15 Antibody (N-term) (ABIN656484 and ABIN2845763) western blot analysis in NCI- cell line lysates (35 µg/lane).This demonstrates the GDF15 antibody detected the GDF15 protein (arrow).

### Immunohistochemistry (Paraffin-embedded Sections)

**Image 3.** GDF15 Antibody (N-term) (ABIN656484 and ABIN2845763) immunohistochemistry analysis in formalin fixed and paraffin embedded human placenta tissue followed by peroxidase conjugation of the secondary antibody and DAB staining.This data demonstrates the use of GDF15 Antibody (N-term) for immunohistochemistry. Clinical relevance has not been evaluated.