



[Go to Product page](#)

Datasheet for ABIN656486

## anti-Cholesterol Esterase antibody (AA 454-482)

### 1 Image

#### Overview

Quantity:	400 µL
Target:	Cholesterol Esterase (CEL)
Binding Specificity:	AA 454-482
Reactivity:	Human
Host:	Rabbit
Clonality:	Polyclonal
Conjugate:	This Cholesterol Esterase antibody is un-conjugated
Application:	Western Blotting (WB)

#### Product Details

Immunogen:	This CEL antibody is generated from rabbits immunized with a KLH conjugated synthetic peptide between 454-482 amino acids from the Central region of human CEL.
Clone:	RB31034
Isotype:	Ig Fraction
Purification:	This antibody is purified through a protein A column, followed by peptide affinity purification.

#### Target Details

Target:	Cholesterol Esterase (CEL)
Alternative Name:	CEL ( <a href="#">CEL Products</a> )
Background:	The protein encoded by this gene is a glycoprotein secreted from the pancreas into the

## Target Details

---

digestive tract and from the lactating mammary gland into human milk. The physiological role of this protein is in cholesterol and lipid-soluble vitamin ester hydrolysis and absorption. This encoded protein promotes large chylomicron production in the intestine. Also its presence in plasma suggests its interactions with cholesterol and oxidized lipoproteins to modulate the progression of atherosclerosis. In pancreatic tumoral cells, this encoded protein is thought to be sequestered within the Golgi compartment and is probably not secreted. This gene contains a variable number of tandem repeat (VNTR) polymorphism in the coding region that may influence the function of the encoded protein.

Molecular Weight:	79322
UniProt:	<a href="#">P19835</a>
Pathways:	<a href="#">Lipid Metabolism</a>

## Application Details

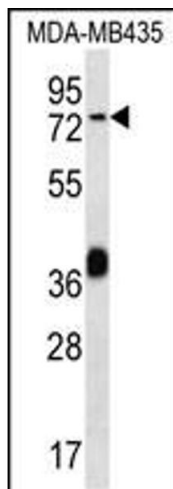
---

Application Notes:	WB: 1:1000
Restrictions:	For Research Use only

## Handling

---

Format:	Liquid
Buffer:	Purified polyclonal antibody supplied in PBS with 0.09 % (W/V) sodium azide.
Preservative:	Sodium azide
Precaution of Use:	This product contains Sodium azide: a POISONOUS AND HAZARDOUS SUBSTANCE which should be handled by trained staff only.
Storage:	4 °C,-20 °C
Expiry Date:	6 months



### Western Blotting

**Image 1.** CEL Antibody (Center) (ABIN656486 and ABIN2837867) western blot analysis in MDA-M cell line lysates (35 µg/lane). This demonstrates the CEL antibody detected the CEL protein (arrow).