

Datasheet for ABIN656497
anti-ABI2 antibody (N-Term)

3 Images

[Go to Product page](#)

Overview

Quantity:	400 µL
Target:	ABI2
Binding Specificity:	AA 1-30, N-Term
Reactivity:	Human, Mouse
Host:	Rabbit
Clonality:	Polyclonal
Conjugate:	This ABI2 antibody is un-conjugated
Application:	Western Blotting (WB), Flow Cytometry (FACS)

Product Details

Immunogen:	This ABI2 antibody is generated from rabbits immunized with a KLH conjugated synthetic peptide between 1-30 amino acids from the N-terminal region of human ABI2.
Clone:	RB31117
Isotype:	Ig Fraction
Purification:	This antibody is purified through a protein A column, followed by peptide affinity purification.

Target Details

Target:	ABI2
Alternative Name:	ABI2 (ABI2 Products)
Background:	ABI2 may act in regulation of cell growth and transformation by interacting with nonreceptor

Target Details

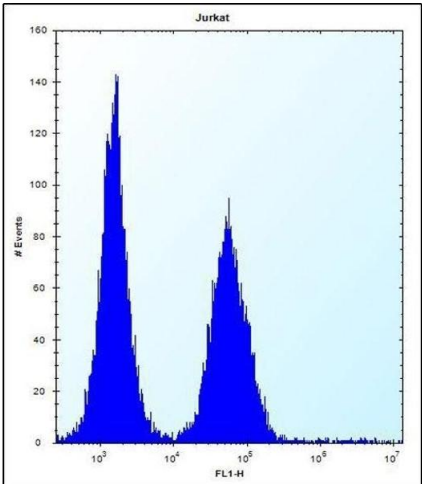
	tyrosine kinases ABL1 and/or ABL2. May be involved in cytoskeletal reorganization. Regulates ABL1/c-Abl-mediated phosphorylation of MENA.
Molecular Weight:	55663
Gene ID:	10152
NCBI Accession:	NP_005750
UniProt:	Q9NYB9

Application Details

Application Notes:	WB: 1:1000. WB: 1:1000. FC: 1:10~50
Restrictions:	For Research Use only

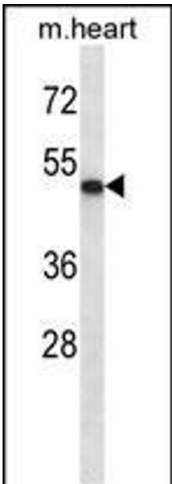
Handling

Format:	Liquid
Buffer:	Purified polyclonal antibody supplied in PBS with 0.09 % (W/V) sodium azide.
Preservative:	Sodium azide
Precaution of Use:	This product contains Sodium azide: a POISONOUS AND HAZARDOUS SUBSTANCE which should be handled by trained staff only.
Storage:	4 °C,-20 °C
Storage Comment:	ABI2 Antibody (N-term) can be refrigerated at 2-8 °C for up to 6 months. For long term storage, place the at -20 °C.
Expiry Date:	6 months



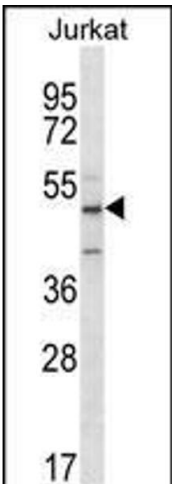
Flow Cytometry

Image 1. ABI2 Antibody (N-term) (ABIN656497 and ABIN2845772) flow cytometric analysis of Jurkat cells (right histogram) compared to a negative control cell (left histogram).FITC-conjugated donkey-anti-rabbit secondary antibodies were used for the analysis.



Western Blotting

Image 2. ABI2 Antibody (N-term) (ABIN656497 and ABIN2845772) western blot analysis in mouse heart tissue lysates (35 µg/lane).This demonstrates the ABI2 antibody detected the ABI2 protein (arrow).



Western Blotting

Image 3. ABI2 Antibody (N-term) western blot analysis in Jurkat cell line lysates (35 µg/lane).This demonstrates the ABI2 antibody detected the ABI2 protein (arrow).