

Datasheet for ABIN656500
anti-PSMB10 antibody (C-Term)[Go to Product page](#)

2 Images

Overview

Quantity:	400 µL
Target:	PSMB10
Binding Specificity:	AA 214-242, C-Term
Reactivity:	Human
Host:	Rabbit
Clonality:	Polyclonal
Conjugate:	This PSMB10 antibody is un-conjugated
Application:	Western Blotting (WB)

Product Details

Immunogen:	This PSMB10 antibody is generated from rabbits immunized with a KLH conjugated synthetic peptide between 214-242 amino acids from the C-terminal region of human PSMB10.
Clone:	RB31189
Isotype:	Ig Fraction
Purification:	This antibody is purified through a protein A column, followed by peptide affinity purification.

Target Details

Target:	PSMB10
Alternative Name:	PSMB10 (PSMB10 Products)
Background:	The proteasome is a multicatalytic proteinase complex with a highly ordered ring-shaped 20S

Target Details

core structure. The core structure is composed of 4 rings of 28 non-identical subunits, 2 rings are composed of 7 alpha subunits and 2 rings are composed of 7 beta subunits. Proteasomes are distributed throughout eukaryotic cells at a high concentration and cleave peptides in an ATP/ubiquitin-dependent process in a non-lysosomal pathway. An essential function of a modified proteasome, the immunoproteasome, is the processing of class I MHC peptides. This gene encodes a member of the proteasome B-type family, also known as the T1B family, that is a 20S core beta subunit. Proteolytic processing is required to generate a mature subunit. Expression of this gene is induced by gamma interferon, and this gene product replaces catalytic subunit 2 (proteasome beta 7 subunit) in the immunoproteasome.

Molecular Weight: 28936

Gene ID: 5699

NCBI Accession: [NP_002792](#)

UniProt: [P40306](#)

Pathways: [Mitotic G1-G1/S Phases](#), [DNA Replication](#), [Synthesis of DNA](#)

Application Details

Application Notes: WB: 1:1000. WB: 1:1000

Restrictions: For Research Use only

Handling

Format: Liquid

Buffer: Purified polyclonal antibody supplied in PBS with 0.09 % (W/V) sodium azide.

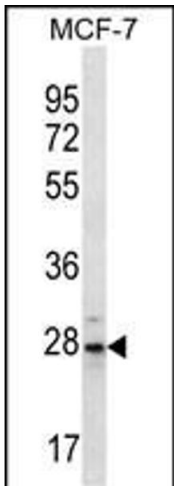
Preservative: Sodium azide

Precaution of Use: This product contains Sodium azide: a POISONOUS AND HAZARDOUS SUBSTANCE which should be handled by trained staff only.

Storage: 4 °C,-20 °C

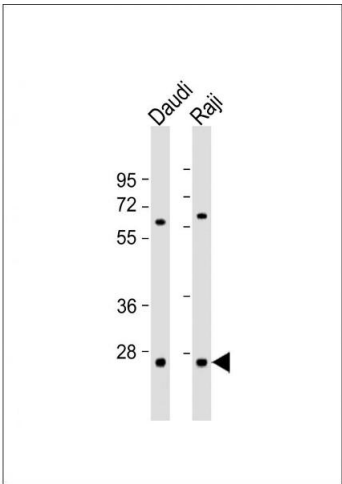
Storage Comment: PSMB10 Antibody (C-term) can be refrigerated at 2-8 °C for up to 6 months. For long term storage, place the at -20 °C.

Expiry Date: 6 months



Western Blotting

Image 1. PSMB10 Antibody (C-term) (ABIN656500 and ABIN2845774) western blot analysis in MCF-7 cell line lysates (35 µg/lane). This demonstrates the PSMB10 antibody detected the PSMB10 protein (arrow).



Western Blotting

Image 2. All lanes : Anti-PSMB10 Antibody (C-term) at 1:1000 dilution Lane 1: Daudi whole cell lysate Lane 2: Raji whole cell lysate Lysates/proteins at 20 µg per lane. Secondary Goat Anti-Rabbit IgG, (H+L), Peroxidase conjugated at 1/10000 dilution. Predicted band size : 29 kDa Blocking/Dilution buffer: 5 % NFDM/TBST.