

Datasheet for ABIN656501
anti-KLRC1 antibody (N-Term)

2 Images

[Go to Product page](#)

Overview

Quantity:	400 µL
Target:	KLRC1
Binding Specificity:	AA 1-30, N-Term
Reactivity:	Human
Host:	Rabbit
Clonality:	Polyclonal
Conjugate:	This KLRC1 antibody is un-conjugated
Application:	Western Blotting (WB), Immunofluorescence (IF)

Product Details

Immunogen:	This KLRC1 antibody is generated from rabbits immunized with a KLH conjugated synthetic peptide between 1-30 amino acids from the N-terminal region of human KLRC1.
Clone:	RB31191
Isotype:	Ig Fraction
Purification:	This antibody is purified through a protein A column, followed by peptide affinity purification.

Target Details

Target:	KLRC1
Alternative Name:	KLRC1 (KLRC1 Products)
Background:	Natural killer (NK) cells are lymphocytes that can mediate lysis of certain tumor cells and virus-

Target Details

infected cells without previous activation. They can also regulate specific humoral and cell-mediated immunity. The protein encoded by this gene belongs to the killer cell lectin-like receptor family, also called NKG2 family, which is a group of transmembrane proteins preferentially expressed in NK cells. This family of proteins is characterized by the type II membrane orientation and the presence of a C-type lectin domain. This protein forms a complex with another family member, KLRD1/CD94, and has been implicated in the recognition of the MHC class I HLA-E molecules in NK cells. The genes of NKG2 family members form a killer cell lectin-like receptor gene cluster on chromosome 12. Four alternatively spliced transcript variants encoding two distinct isoforms have been observed. [provided by RefSeq].

Molecular Weight: 26314

Gene ID: 3821

NCBI Accession: [NP_002250](#), [NP_015567](#), [NP_998822](#), [NP_998823](#)

UniProt: [P26715](#)

Application Details

Application Notes: IF: 1:10~50. WB: 1:1000

Restrictions: For Research Use only

Handling

Format: Liquid

Buffer: Purified polyclonal antibody supplied in PBS with 0.09 % (W/V) sodium azide.

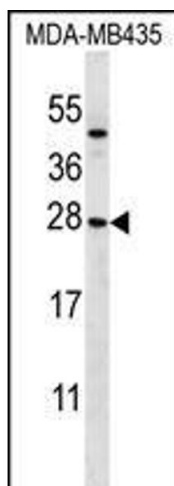
Preservative: Sodium azide

Precaution of Use: This product contains Sodium azide: a POISONOUS AND HAZARDOUS SUBSTANCE which should be handled by trained staff only.

Storage: 4 °C, -20 °C

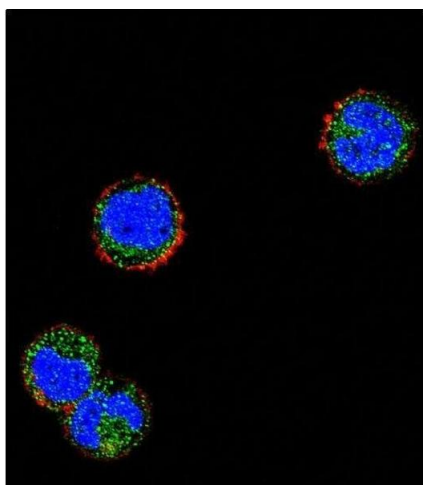
Storage Comment: KLRC1 Antibody (N-term) can be refrigerated at 2-8 °C for up to 6 months. For long term storage, place the at -20 °C.

Expiry Date: 6 months



Western Blotting

Image 1. KLRC1 Antibody (N-term) (ABIN656501 and ABIN2845775) western blot analysis in MDA-M cell line lysates (35 µg/lane). This demonstrates the KLRC1 antibody detected the KLRC1 protein (arrow).



Immunofluorescence

Image 2. Confocal immunofluorescent analysis of KLRC1 Antibody (N-term) (ABIN656501 and ABIN2845775) with MDA-M cell followed by Alexa Fluor 488-conjugated goat anti-rabbit IgG (green). Actin filaments have been labeled with Alexa Fluor 555 phalloidin (red). DAPI was used to stain the cell nuclear (blue).