

Datasheet for ABIN656505  
**anti-CARTPT antibody (N-Term)**[Go to Product page](#)

## 2 Images

## Overview

Quantity:	400 µL
Target:	CARTPT
Binding Specificity:	AA 26-55, N-Term
Reactivity:	Mouse
Host:	Rabbit
Clonality:	Polyclonal
Conjugate:	This CARTPT antibody is un-conjugated
Application:	Western Blotting (WB), Immunohistochemistry (Paraffin-embedded Sections) (IHC (p))

## Product Details

Immunogen:	This CARTPT antibody is generated from rabbits immunized with a KLH conjugated synthetic peptide between 26-55 amino acids from the N-terminal region of human CARTPT.
Clone:	RB31281
Isotype:	Ig Fraction
Purification:	This antibody is purified through a protein A column, followed by peptide affinity purification.

## Target Details

Target:	CARTPT
Alternative Name:	CARTPT ( <a href="#">CARTPT Products</a> )
Background:	This gene encodes a secreted protein which is processed by prohormone/proprotein

## Target Details

convertases to produce smaller, biologically active peptides. Expression of the transcript for this gene is regulated by certain drugs such as cocaine, and the encoded protein is thought to be involved in the regulation of appetite and stress. Mutations in this gene are associated with susceptibility to obesity.

Molecular Weight: 12829

Gene ID: 9607

NCBI Accession: [NP\\_004282](#)

UniProt: [Q16568](#)

Pathways: [Hormone Transport](#), [Negative Regulation of Hormone Secretion](#), [Carbohydrate Homeostasis](#), [Feeding Behaviour](#)

## Application Details

Application Notes: WB: 1:1000. IHC-P: 1:10~50

Restrictions: For Research Use only

## Handling

Format: Liquid

Buffer: Purified polyclonal antibody supplied in PBS with 0.09 % (W/V) sodium azide.

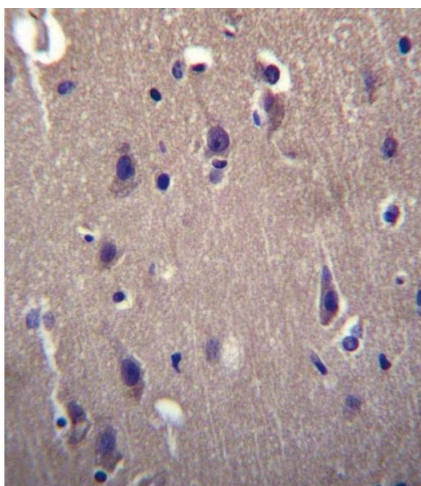
Preservative: Sodium azide

Precaution of Use: This product contains Sodium azide: a POISONOUS AND HAZARDOUS SUBSTANCE which should be handled by trained staff only.

Storage: 4 °C, -20 °C

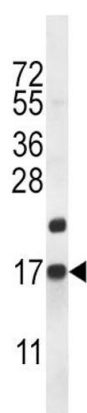
Storage Comment: CARTPT Antibody (N-term) can be refrigerated at 2-8 °C for up to 6 months. For long term storage, place the at -20 °C.

Expiry Date: 6 months



#### Immunohistochemistry (Paraffin-embedded Sections)

**Image 1.** CARTPT Antibody (N-term) (ABIN656505 and ABIN2845777) immunohistochemistry analysis in formalin fixed and paraffin embedded human brain tissue followed by peroxidase conjugation of the secondary antibody and DAB staining. This data demonstrates the use of CARTPT Antibody (N-term) for immunohistochemistry. Clinical relevance has not been evaluated.



#### Western Blotting

**Image 2.** CARTPT Antibody (N-term) (ABIN656505 and ABIN2845777) western blot analysis in mouse heart tissue lysates (35 µg/lane). This demonstrates the CARTPT antibody detected the CARTPT protein (arrow).