



[Go to Product page](#)

Datasheet for ABIN656509

anti-RPL23 antibody (AA 49-78)

3 Images

Overview

Quantity:	400 µL
Target:	RPL23
Binding Specificity:	AA 49-78
Reactivity:	Human, Mouse, Rat
Host:	Rabbit
Clonality:	Polyclonal
Conjugate:	This RPL23 antibody is un-conjugated
Application:	Western Blotting (WB), Immunohistochemistry (Paraffin-embedded Sections) (IHC (p))

Product Details

Immunogen:	This RPL23 antibody is generated from rabbits immunized with a KLH conjugated synthetic peptide between 49-78 amino acids from the Central region of human RPL23.
Clone:	RB31322
Isotype:	Ig Fraction
Predicted Reactivity:	B, Zf, Pig
Purification:	This antibody is purified through a protein A column, followed by peptide affinity purification.

Target Details

Target:	RPL23
Alternative Name:	RPL23 (RPL23 Products)

Target Details

Background: Ribosomes, the organelles that catalyze protein synthesis, consist of a small 40S subunit and a large 60S subunit. Together these subunits are composed of 4 RNA species and approximately 80 structurally distinct proteins. This gene encodes a ribosomal protein that is a component of the 60S subunit. The protein belongs to the L14P family of ribosomal proteins. It is located in the cytoplasm. This gene has been referred to as rpl17 because the encoded protein shares amino acid identity with ribosomal protein L17 from *Saccharomyces cerevisiae*, however, its official symbol is RPL23. As is typical for genes encoding ribosomal proteins, there are multiple processed pseudogenes of this gene dispersed through the genome.

Molecular Weight: 14865

Gene ID: 9349

NCBI Accession: [NP_000969](#)

UniProt: [P62829](#)

Pathways: [Protein targeting to Nucleus](#)

Application Details

Application Notes: WB: 1:2000. WB: 1:1000. IHC-P: 1:10~50

Restrictions: For Research Use only

Handling

Format: Liquid

Buffer: Purified polyclonal antibody supplied in PBS with 0.09 % (W/V) sodium azide.

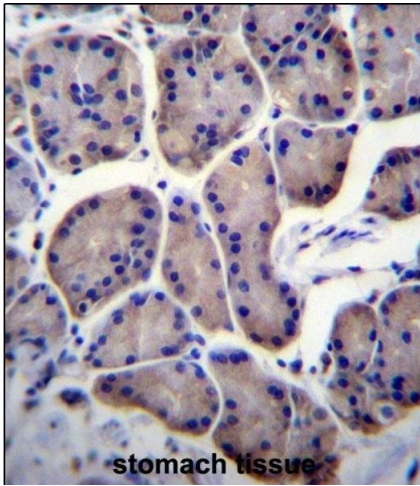
Preservative: Sodium azide

Precaution of Use: This product contains Sodium azide: a POISONOUS AND HAZARDOUS SUBSTANCE which should be handled by trained staff only.

Storage: 4 °C, -20 °C

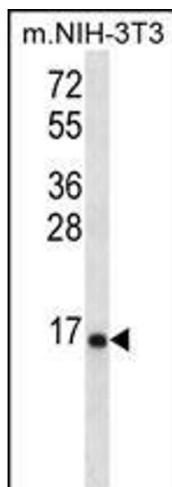
Storage Comment: RPL23 Antibody (Center) can be refrigerated at 2-8 °C for up to 6 months. For long term storage, place the at -20 °C.

Expiry Date: 6 months



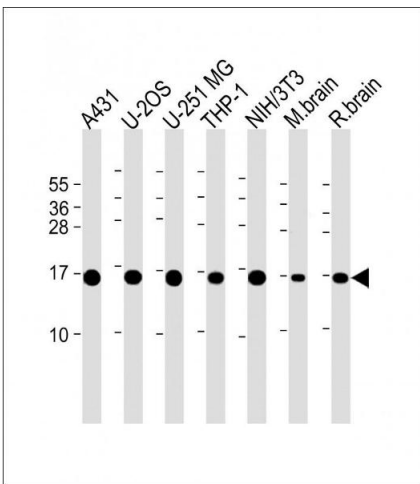
Immunohistochemistry (Paraffin-embedded Sections)

Image 1. RPL23 Antibody (Center) (ABIN656509 and ABIN2845780) immunohistochemistry analysis in formalin fixed and paraffin embedded human stomach tissue followed by peroxidase conjugation of the secondary antibody and DAB staining. This data demonstrates the use of RPL23 Antibody (Center) for immunohistochemistry. Clinical relevance has not been evaluated.



Western Blotting

Image 2. RPL23 Antibody (Center) (ABIN656509 and ABIN2845780) western blot analysis in mouse NIH-3T3 cell line lysates (35 µg/lane). This demonstrates the RPL23 antibody detected the RPL23 protein (arrow).



Western Blotting

Image 3. All lanes : Anti-RPL23 Antibody (Center) at 1:2000 dilution Lane 1: A431 whole cell lysate Lane 2: U-2OS whole cell lysate Lane 3: U-251 MG whole cell lysate Lane 4: THP-1 whole cell lysate Lane 5: NIH/3T3 whole cell lysate Lane 6: mouse brain lysate Lane 7: rat brain lysate Lysates/proteins at 20 µg per lane. Secondary Goat Anti-Rabbit IgG, (H+L), Peroxidase conjugated at 1/10000 dilution. Predicted band size : 15 kDa Blocking/Dilution buffer: 5 % NFD/MTBST.