



[Go to Product page](#)

Datasheet for ABIN656514

## anti-GP111 antibody (AA 366-393)

### 2 Images

#### Overview

Quantity:	400 µL
Target:	GP111 (GPR111)
Binding Specificity:	AA 366-393
Reactivity:	Human
Host:	Rabbit
Clonality:	Polyclonal
Conjugate:	This GP111 antibody is un-conjugated
Application:	Western Blotting (WB), Immunohistochemistry (Paraffin-embedded Sections) (IHC (p))

#### Product Details

Immunogen:	This GP111 antibody is generated from rabbits immunized with a KLH conjugated synthetic peptide between 366-393 amino acids from the Central region of human GP111.
Clone:	RB31432
Isotype:	Ig Fraction
Purification:	This antibody is purified through a protein A column, followed by peptide affinity purification.

#### Target Details

Target:	GP111 (GPR111)
Alternative Name:	GP111 ( <a href="#">GPR111 Products</a> )
Background:	GP111 is an orphan receptor.

## Target Details

Molecular Weight:	78569
Gene ID:	222611
NCBI Accession:	<a href="#">NP_722581</a>
UniProt:	<a href="#">Q8IZF7</a>

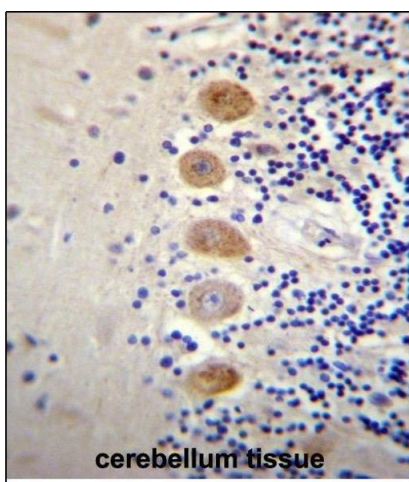
## Application Details

Application Notes:	WB: 1:1000. IHC-P: 1:10~50
Restrictions:	For Research Use only

## Handling

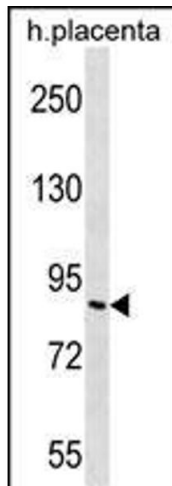
Format:	Liquid
Buffer:	Purified polyclonal antibody supplied in PBS with 0.09 % (W/V) sodium azide.
Preservative:	Sodium azide
Precaution of Use:	This product contains Sodium azide: a POISONOUS AND HAZARDOUS SUBSTANCE which should be handled by trained staff only.
Storage:	4 °C,-20 °C
Storage Comment:	GP111 Antibody (Center) can be refrigerated at 2-8 °C for up to 6 months. For long term storage, place the at -20 °C.
Expiry Date:	6 months

## Images



### Immunohistochemistry (Paraffin-embedded Sections)

**Image 1.** G Antibody (Center) (ABIN656514 and ABIN2845785) immunohistochemistry analysis in formalin fixed and paraffin embedded human cerebellum tissue followed by peroxidase conjugation of the secondary antibody and DAB staining. This data demonstrates the use of G Antibody (Center) for immunohistochemistry. Clinical relevance has not been evaluated.



### Western Blotting

**Image 2.** G Antibody (Center) (ABIN656514 and ABIN2845785) western blot analysis in human placenta tissue lysates (35 µg/lane). This demonstrates the G antibody detected the G protein (arrow).