



[Go to Product page](#)

Datasheet for ABIN656521

## anti-LDLRAD2 antibody (AA 132-160)

### 2 Images

#### Overview

Quantity:	400 µL
Target:	LDLRAD2
Binding Specificity:	AA 132-160
Reactivity:	Human
Host:	Rabbit
Clonality:	Polyclonal
Conjugate:	This LDLRAD2 antibody is un-conjugated
Application:	Western Blotting (WB), Flow Cytometry (FACS)

#### Product Details

Immunogen:	This LDLRAD2 antibody is generated from rabbits immunized with a KLH conjugated synthetic peptide between 132-160 amino acids from the Central region of human LDLRAD2.
Clone:	RB31511
Isotype:	Ig Fraction
Purification:	This antibody is purified through a protein A column, followed by peptide affinity purification.

#### Target Details

Target:	LDLRAD2
Alternative Name:	LDLRAD2 ( <a href="#">LDLRAD2 Products</a> )
Background:	The exact functions of this protein remain unknown.

## Target Details

Molecular Weight:	28581
Gene ID:	401944
NCBI Accession:	<a href="#">NP_001013715</a>
UniProt:	<a href="#">Q5SZ11</a>

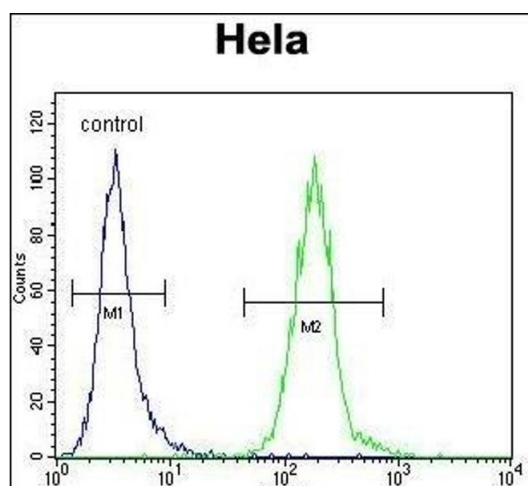
## Application Details

Application Notes:	WB: 1:1000. FC: 1:10~50
Restrictions:	For Research Use only

## Handling

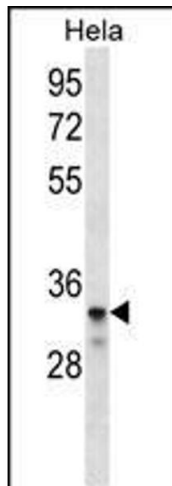
Format:	Liquid
Buffer:	Purified polyclonal antibody supplied in PBS with 0.09 % (W/V) sodium azide.
Preservative:	Sodium azide
Precaution of Use:	This product contains Sodium azide: a POISONOUS AND HAZARDOUS SUBSTANCE which should be handled by trained staff only.
Storage:	4 °C, -20 °C
Storage Comment:	LDLRAD2 Antibody (Center) can be refrigerated at 2-8 °C for up to 6 months. For long term storage, place the at -20 °C.
Expiry Date:	6 months

## Images



### Flow Cytometry

**Image 1.** LDLRAD2 Antibody (Center) (ABIN656521 and ABIN2845790) flow cytometric analysis of HeLa cells (right histogram) compared to a negative control cell (left histogram). FITC-conjugated goat-anti-rabbit secondary antibodies were used for the analysis.



### Western Blotting

**Image 2.** LDLRAD2 Antibody (Center) (ABIN656521 and ABIN2845790) western blot analysis in HeLa cell line lysates (35 µg/lane). This demonstrates the LDLRAD2 antibody detected the LDLRAD2 protein (arrow).