

Datasheet for ABIN656530
anti-YIF1B antibody (N-Term)[Go to Product page](#)

2 Images

Overview

Quantity:	400 µL
Target:	YIF1B
Binding Specificity:	AA 82-110, N-Term
Reactivity:	Human
Host:	Rabbit
Clonality:	Polyclonal
Conjugate:	This YIF1B antibody is un-conjugated
Application:	Western Blotting (WB), Immunohistochemistry (Paraffin-embedded Sections) (IHC (p))

Product Details

Immunogen:	This YIF1B antibody is generated from rabbits immunized with a KLH conjugated synthetic peptide between 82-110 amino acids from the N-terminal region of human YIF1B.
Clone:	RB32007
Isotype:	Ig Fraction
Purification:	This antibody is purified through a protein A column, followed by peptide affinity purification.

Target Details

Target:	YIF1B
Alternative Name:	YIF1B (YIF1B Products)
Background:	YIF1B belongs to the YIF1 family. The functions of YIF1B remain unknown.

Target Details

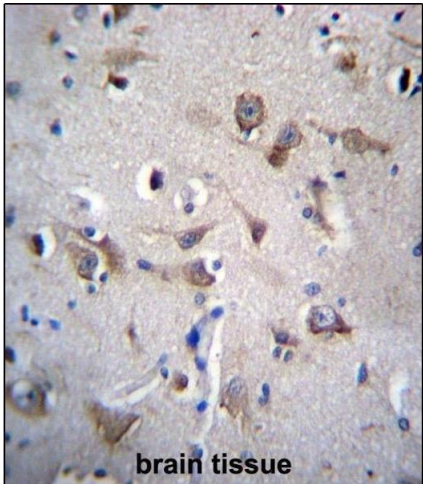
Molecular Weight:	34435
Gene ID:	90522
NCBI Accession:	NP_001034760 , NP_001034761 , NP_001034762 , NP_001138933 , NP_001138934 , NP_001138935 , NP_291035
UniProt:	Q5BJH7

Application Details

Application Notes:	WB: 1:1000. IHC-P: 1:10~50
Restrictions:	For Research Use only

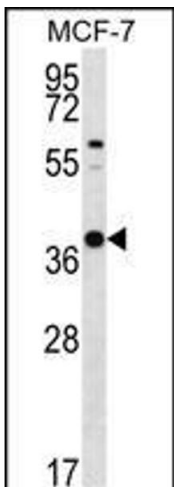
Handling

Format:	Liquid
Buffer:	Purified polyclonal antibody supplied in PBS with 0.09 % (W/V) sodium azide.
Preservative:	Sodium azide
Precaution of Use:	This product contains Sodium azide: a POISONOUS AND HAZARDOUS SUBSTANCE which should be handled by trained staff only.
Storage:	4 °C, -20 °C
Storage Comment:	YIF1B Antibody (N-term) can be refrigerated at 2-8 °C for up to 6 months. For long term storage, place the at -20 °C.
Expiry Date:	6 months



Immunohistochemistry (Paraffin-embedded Sections)

Image 1. YIF1B Antibody (N-term) (ABIN656530 and ABIN2845795) immunohistochemistry analysis in formalin fixed and paraffin embedded human brain tissue followed by peroxidase conjugation of the secondary antibody and DAB staining. This data demonstrates the use of YIF1B Antibody (N-term) for immunohistochemistry. Clinical relevance has not been evaluated.



Western Blotting

Image 2. YIF1B Antibody (N-term) (ABIN656530 and ABIN2845795) western blot analysis in MCF-7 cell line lysates (35 µg/lane). This demonstrates the YIF1B antibody detected the YIF1B protein (arrow).