



[Go to Product page](#)

Datasheet for ABIN656531

anti-LIX1L antibody (AA 160-189)

2 Images

Overview

Quantity:	400 µL
Target:	LIX1L
Binding Specificity:	AA 160-189
Reactivity:	Human, Mouse
Host:	Rabbit
Clonality:	Polyclonal
Conjugate:	This LIX1L antibody is un-conjugated
Application:	Western Blotting (WB)

Product Details

Immunogen:	This LIX1L antibody is generated from rabbits immunized with a KLH conjugated synthetic peptide between 160-189 amino acids from the Central region of human LIX1L.
Clone:	RB32034
Isotype:	Ig Fraction
Predicted Reactivity:	Rat
Purification:	This antibody is purified through a protein A column, followed by peptide affinity purification.

Target Details

Target:	LIX1L
Alternative Name:	LIX1L (LIX1L Products)

Target Details

Background: The exact functions of LIX1L remain unknown.

Molecular Weight: 36563

Gene ID: 128077

NCBI Accession: [NP_714924](#)

UniProt: [Q8IVB5](#)

Application Details

Application Notes: WB: 1:1000. WB: 1:1000

Restrictions: For Research Use only

Handling

Format: Liquid

Buffer: Purified polyclonal antibody supplied in PBS with 0.09 % (W/V) sodium azide.

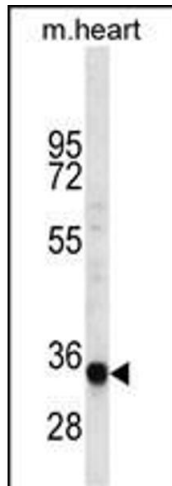
Preservative: Sodium azide

Precaution of Use: This product contains Sodium azide: a POISONOUS AND HAZARDOUS SUBSTANCE which should be handled by trained staff only.

Storage: 4 °C,-20 °C

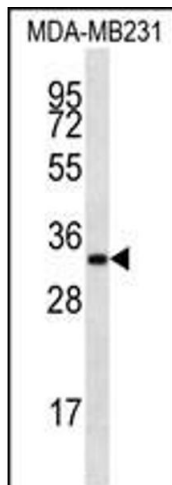
Storage Comment: LIX1L Antibody (Center) can be refrigerated at 2-8 °C for up to 6 months. For long term storage, place the at -20 °C.

Expiry Date: 6 months



Western Blotting

Image 1. LIX1L Antibody (Center) (ABIN656531 and ABIN2845797) western blot analysis in mouse heart tissue lysates (35 µg/lane). This demonstrates the LIX1L antibody detected the LIX1L protein (arrow).



Western Blotting

Image 2. LIX1L Antibody (Center) (ABIN656531 and ABIN2845797) western blot analysis in MDA-M cell line lysates (35 µg/lane). This demonstrates the LIX1L antibody detected the LIX1L protein (arrow).