

Datasheet for ABIN656537
anti-ASS1 antibody (C-Term)[Go to Product page](#)

4 Images

Overview

Quantity:	400 µL
Target:	ASS1
Binding Specificity:	AA 281-310, C-Term
Reactivity:	Human
Host:	Rabbit
Clonality:	Polyclonal
Conjugate:	This ASS1 antibody is un-conjugated
Application:	Western Blotting (WB), Flow Cytometry (FACS), Immunohistochemistry (Paraffin-embedded Sections) (IHC (p))

Product Details

Immunogen:	This ASS1 antibody is generated from rabbits immunized with a KLH conjugated synthetic peptide between 281-310 amino acids from the C-terminal region of human ASS1.
Clone:	RB32051
Isotype:	Ig Fraction
Predicted Reactivity:	B, C, M, Rat
Purification:	This antibody is purified through a protein A column, followed by peptide affinity purification.

Target Details

Target:	ASS1
---------	------

Target Details

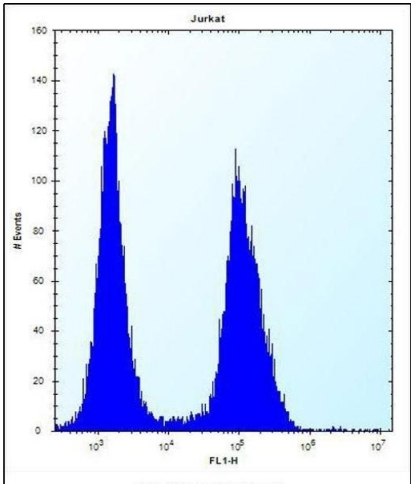
Alternative Name:	ASS1 (ASS1 Products)
Background:	The protein encoded by this gene catalyzes the penultimate step of the arginine biosynthetic pathway. There are approximately 10 to 14 copies of this gene including the pseudogenes scattered across the human genome, among which the one located on chromosome 9 appears to be the only functional gene for argininosuccinate synthetase. Mutations in the chromosome 9 copy of ASS cause citrullinemia. Two transcript variants encoding the same protein have been found for this gene.
Molecular Weight:	46530
Gene ID:	445
NCBI Accession:	NP_000041 , NP_446464
UniProt:	P00966
Pathways:	Response to Growth Hormone Stimulus , Cellular Response to Molecule of Bacterial Origin

Application Details

Application Notes:	WB: 1:1000. WB: 1:1000. IHC-P: 1:10~50. FC: 1:10~50
Restrictions:	For Research Use only

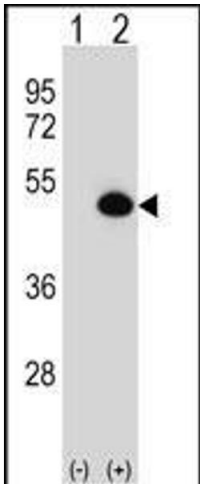
Handling

Format:	Liquid
Buffer:	Purified polyclonal antibody supplied in PBS with 0.09 % (W/V) sodium azide.
Preservative:	Sodium azide
Precaution of Use:	This product contains Sodium azide: a POISONOUS AND HAZARDOUS SUBSTANCE which should be handled by trained staff only.
Storage:	4 °C,-20 °C
Storage Comment:	ASS1 Antibody (C-term) can be refrigerated at 2-8 °C for up to 6 months. For long term storage, place the at -20 °C.
Expiry Date:	6 months



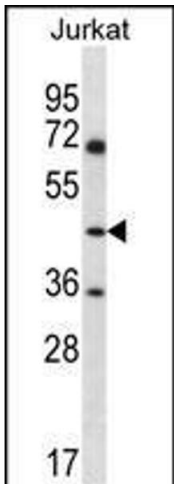
Flow Cytometry

Image 1. ASS1 Antibody (C-term) (ABIN656537 and ABIN2845801) flow cytometric analysis of Jurkat cells (right histogram) compared to a negative control cell (left histogram). FITC-conjugated donkey-anti-rabbit secondary antibodies were used for the analysis.



Western Blotting

Image 2. Western blot analysis of ASS1 (arrow) using rabbit polyclonal ASS1 Antibody (C-term) (ABIN656537 and ABIN2845801). 293 cell lysates (2 µg/lane) either nontransfected (Lane 1) or transiently transfected (Lane 2) with the ASS1 gene.



Western Blotting

Image 3. ASS1 Antibody (C-term) (ABIN656537 and ABIN2845801) western blot analysis in Jurkat cell line lysates (35 µg/lane). This demonstrates the ASS1 antibody detected the ASS1 protein (arrow).

Please check the [product details page](#) for more images. Overall 4 images are available for ABIN656537.