

Datasheet for ABIN656538
anti-SERPINE2 antibody (AA 106-135)[Go to Product page](#)

2 Images

Overview

Quantity:	400 µL
Target:	SERPINE2
Binding Specificity:	AA 106-135
Reactivity:	Human
Host:	Rabbit
Clonality:	Polyclonal
Conjugate:	This SERPINE2 antibody is un-conjugated
Application:	Western Blotting (WB), Immunohistochemistry (Paraffin-embedded Sections) (IHC (p))

Product Details

Immunogen:	This SERPINE2 antibody is generated from rabbits immunized with a KLH conjugated synthetic peptide between 106-135 amino acids from the Central region of human SERPINE2.
Clone:	RB32054
Isotype:	Ig Fraction
Purification:	This antibody is purified through a protein A column, followed by peptide affinity purification.

Target Details

Target:	SERPINE2
Alternative Name:	SERPINE2 (SERPINE2 Products)
Background:	SERPINE2 is a serine protease inhibitor with activity toward thrombin, trypsin, and urokinase.

Target Details

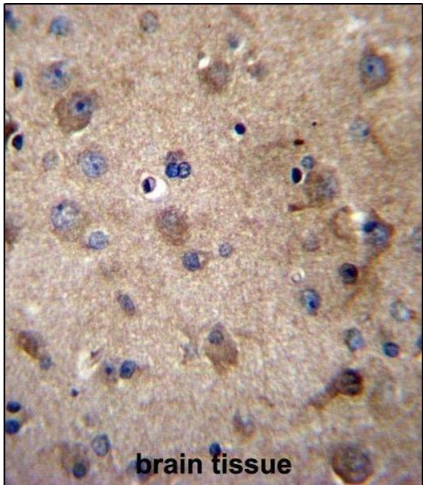
	Promotes neurite extension by inhibiting thrombin. Binds heparin.
Molecular Weight:	44002
Gene ID:	5270
NCBI Accession:	NP_001130000 , NP_001130002 , NP_006207
UniProt:	P07093

Application Details

Application Notes:	WB: 1:1000. IHC-P: 1:10~50
Restrictions:	For Research Use only

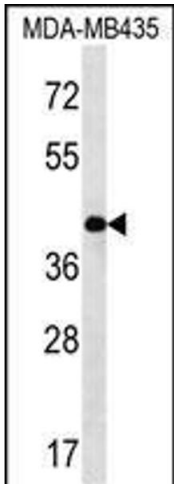
Handling

Format:	Liquid
Buffer:	Purified polyclonal antibody supplied in PBS with 0.09 % (W/V) sodium azide.
Preservative:	Sodium azide
Precaution of Use:	This product contains Sodium azide: a POISONOUS AND HAZARDOUS SUBSTANCE which should be handled by trained staff only.
Storage:	4 °C,-20 °C
Storage Comment:	SERPINE2 Antibody (Center) can be refrigerated at 2-8 °C for up to 6 months. For long term storage, place the at -20 °C.
Expiry Date:	6 months



Immunohistochemistry (Paraffin-embedded Sections)

Image 1. SERPINE2 Antibody (Center) (ABIN656538 and ABIN2845802) immunohistochemistry analysis in formalin fixed and paraffin embedded human brain tissue followed by peroxidase conjugation of the secondary antibody and DAB staining. This data demonstrates the use of SERPINE2 Antibody (Center) for immunohistochemistry. Clinical relevance has not been evaluated.



Western Blotting

Image 2. SERPINE2 Antibody (Center) (ABIN656538 and ABIN2845802) western blot analysis in MDA-M cell line lysates (35 µg/lane). This demonstrates the SERPINE2 antibody detected the SERPINE2 protein (arrow).