

Datasheet for ABIN656542

anti-Melanophilin antibody (C-Term)**2** Images[Go to Product page](#)

Overview

Quantity:	400 µL
Target:	Melanophilin (MLPH)
Binding Specificity:	AA 541-569, C-Term
Reactivity:	Human
Host:	Rabbit
Clonality:	Polyclonal
Conjugate:	This Melanophilin antibody is un-conjugated
Application:	Western Blotting (WB), Immunohistochemistry (Paraffin-embedded Sections) (IHC (p))

Product Details

Immunogen:	This MLPH antibody is generated from rabbits immunized with a KLH conjugated synthetic peptide between 541-569 amino acids from the C-terminal region of human MLPH.
Clone:	RB32075
Isotype:	Ig Fraction
Purification:	This antibody is purified through a protein A column, followed by peptide affinity purification.

Target Details

Target:	Melanophilin (MLPH)
Alternative Name:	MLPH (MLPH Products)
Background:	This gene encodes a member of the exophilin subfamily of Rab effector proteins. The protein

Target Details

forms a ternary complex with the small Ras-related GTPase Rab27A in its GTP-bound form and the motor protein myosin Va. A similar protein complex in mouse functions to tether pigment-producing organelles called melanosomes to the actin cytoskeleton in melanocytes, and is required for visible pigmentation in the hair and skin. A mutation in this gene results in Griscelli syndrome type 3, which is characterized by a silver-gray hair color and abnormal pigment distribution in the hair shaft. Several alternatively spliced transcript variants of this gene have been described, but the full-length nature of some of these variants has not been determined.

Molecular Weight: 65949

Gene ID: 79083

NCBI Accession: [NP_001035932](#), [NP_001268402](#), [NP_077006](#)

UniProt: [Q9BV36](#)

Application Details

Application Notes: WB: 1:1000. IHC-P: 1:10~50

Restrictions: For Research Use only

Handling

Format: Liquid

Buffer: Purified polyclonal antibody supplied in PBS with 0.09 % (W/V) sodium azide.

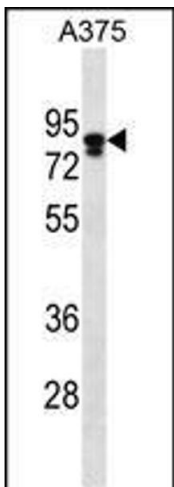
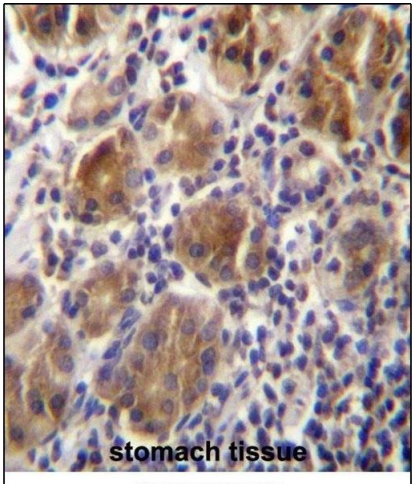
Preservative: Sodium azide

Precaution of Use: This product contains Sodium azide: a POISONOUS AND HAZARDOUS SUBSTANCE which should be handled by trained staff only.

Storage: 4 °C, -20 °C

Storage Comment: MLPH Antibody (C-term) can be refrigerated at 2-8 °C for up to 6 months. For long term storage, place the at -20 °C.

Expiry Date: 6 months



Immunohistochemistry (Paraffin-embedded Sections)

Image 1. MLPH Antibdy (C-term) (ABIN656542 and ABIN2845806) immunohistochemistry analysis in formalin fixed and paraffin embedded human stomach tissue followed by peroxidase conjugation of the secondary antibody and DAB staining.This data demonstrates the use of MLPH Antibdy (C-term) for immunohistochemistry. Clinical relevance has not been evaluated.

Western Blotting

Image 2. MLPH Antibody (C-term) (ABIN656542 and ABIN2845806) western blot analysis in cell line lysates (35 µg/lane).This demonstrates the MLPH antibody detected the MLPH protein (arrow).