

Datasheet for ABIN656555
anti-SQLE antibody (N-Term)[Go to Product page](#)

2 Images

Overview

Quantity:	400 µL
Target:	SQLE
Binding Specificity:	AA 68-97, N-Term
Reactivity:	Human
Host:	Rabbit
Clonality:	Polyclonal
Conjugate:	This SQLE antibody is un-conjugated
Application:	Western Blotting (WB), Immunohistochemistry (Paraffin-embedded Sections) (IHC (p))

Product Details

Immunogen:	This SQLE antibody is generated from rabbits immunized with a KLH conjugated synthetic peptide between 68-97 amino acids from the N-terminal region of human SQLE.
Clone:	RB32163
Isotype:	Ig Fraction
Purification:	This antibody is purified through a protein A column, followed by peptide affinity purification.

Target Details

Target:	SQLE
Alternative Name:	SQLE (SQLE Products)
Background:	Squalene epoxidase catalyzes the first oxygenation step in sterol biosynthesis and is thought to

Target Details

	be one of the rate-limiting enzymes in this pathway.
Molecular Weight:	63923
Gene ID:	6713
NCBI Accession:	NP_003120
UniProt:	Q14534

Application Details

Application Notes:	WB: 1:1000. IHC-P: 1:10~50
Restrictions:	For Research Use only

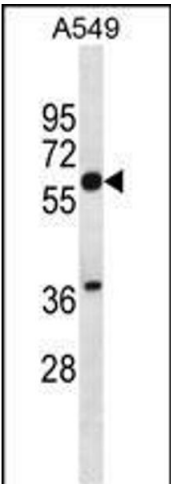
Handling

Format:	Liquid
Buffer:	Purified polyclonal antibody supplied in PBS with 0.09 % (W/V) sodium azide.
Preservative:	Sodium azide
Precaution of Use:	This product contains Sodium azide: a POISONOUS AND HAZARDOUS SUBSTANCE which should be handled by trained staff only.
Storage:	4 °C,-20 °C
Storage Comment:	SQLE Antibody (N-term) can be refrigerated at 2-8 °C for up to 6 months. For long term storage, place the at -20 °C.
Expiry Date:	6 months



Immunohistochemistry (Paraffin-embedded Sections)

Image 1. SQLE Antibody (N-term) (ABIN656555 and ABIN2845817) immunohistochemistry analysis in formalin fixed and paraffin embedded human testis tissue followed by peroxidase conjugation of the secondary antibody and DAB staining. This data demonstrates the use of SQLE Antibody (N-term) for immunohistochemistry. Clinical relevance has not been evaluated.



Western Blotting

Image 2. SQLE Antibody (N-term) (ABIN656555 and ABIN2845817) western blot analysis in A549 cell line lysates (35 µg/lane). This demonstrates the SQLE antibody detected the SQLE protein (arrow).