

Datasheet for ABIN656556  
**anti-FAM105A antibody (AA 196-224)**[Go to Product page](#)

## 2 Images

## Overview

Quantity:	400 µL
Target:	FAM105A
Binding Specificity:	AA 196-224
Reactivity:	Human
Host:	Rabbit
Clonality:	Polyclonal
Conjugate:	This FAM105A antibody is un-conjugated
Application:	Western Blotting (WB), Flow Cytometry (FACS)

## Product Details

Immunogen:	This F105A antibody is generated from rabbits immunized with a KLH conjugated synthetic peptide between 196-224 amino acids from the Central region of human F105A.
Clone:	RB32290
Isotype:	Ig Fraction
Purification:	This antibody is purified through a protein A column, followed by peptide affinity purification.

## Target Details

Target:	FAM105A
Alternative Name:	F105A ( <a href="#">FAM105A Products</a> )
Background:	The exact functions of this protein remain unknown.

## Target Details

Molecular Weight:	42196
Gene ID:	54491
NCBI Accession:	<a href="#">NP_061891</a>
UniProt:	<a href="#">Q9NUU6</a>

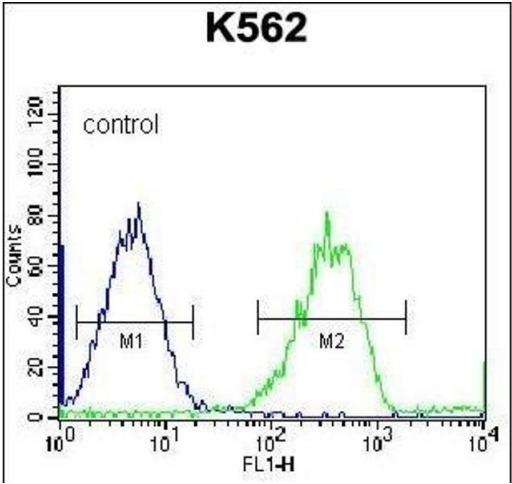
## Application Details

Application Notes:	WB: 1:1000. FC: 1:10~50
Restrictions:	For Research Use only

## Handling

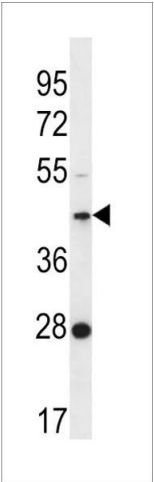
Format:	Liquid
Buffer:	Purified polyclonal antibody supplied in PBS with 0.09 % (W/V) sodium azide.
Preservative:	Sodium azide
Precaution of Use:	This product contains Sodium azide: a POISONOUS AND HAZARDOUS SUBSTANCE which should be handled by trained staff only.
Storage:	4 °C,-20 °C
Storage Comment:	F105A Antibody (Center) can be refrigerated at 2-8 °C for up to 6 months. For long term storage, place the at -20 °C.
Expiry Date:	6 months

## Validation report #102069 for Western Blotting (WB)



### Flow Cytometry

**Image 1.** F105A Antibody (Center) (ABIN656556 and ABIN2845818) flow cytometric analysis of K562 cells (right histogram) compared to a negative control cell (left histogram). FITC-conjugated goat-anti-rabbit secondary antibodies were used for the analysis.



Western Blotting

**Image 2.** F105A Antibody (Center) (ABIN656556 and ABIN2845818) western blot analysis in K562 cell line lysates (35 µg/lane). This demonstrates the F105A antibody detected the F105A protein (arrow).