

Datasheet for ABIN656557
anti-RFX3 antibody (C-Term)[Go to Product page](#)

1 Image

Overview

Quantity:	400 µL
Target:	RFX3
Binding Specificity:	AA 661-690, C-Term
Reactivity:	Human
Host:	Rabbit
Clonality:	Polyclonal
Conjugate:	This RFX3 antibody is un-conjugated
Application:	Western Blotting (WB)

Product Details

Immunogen:	This RFX3 antibody is generated from rabbits immunized with a KLH conjugated synthetic peptide between 661-690 amino acids from the C-terminal region of human RFX3.
Clone:	RB32572
Isotype:	Ig Fraction
Predicted Reactivity:	Pr
Purification:	This antibody is purified through a protein A column, followed by peptide affinity purification.

Target Details

Target:	RFX3
Alternative Name:	RFX3 (RFX3 Products)

Target Details

Background: This gene is a member of the regulatory factor X gene family, which encodes transcription factors that contain a highly-conserved winged helix DNA binding domain. The protein encoded by this gene is structurally related to regulatory factors X1, X2, X4, and X5. It is a transcriptional activator that can bind DNA as a monomer or as a heterodimer with other RFX family members. Two transcript variants encoding different isoforms have been described for this gene, and at least one of the variants utilizes alternative polyadenylation signals.

Molecular Weight: 83530

Gene ID: 5991

NCBI Accession: [NP_001269045](#), [NP_001269046](#), [NP_002910](#), [NP_602304](#)

UniProt: [P48380](#)

Application Details

Application Notes: WB: 1:1000

Restrictions: For Research Use only

Handling

Format: Liquid

Buffer: Purified polyclonal antibody supplied in PBS with 0.09 % (W/V) sodium azide.

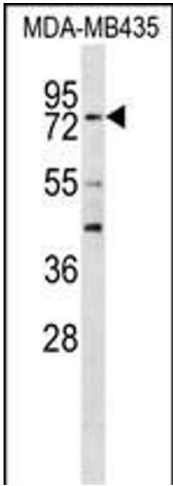
Preservative: Sodium azide

Precaution of Use: This product contains Sodium azide: a POISONOUS AND HAZARDOUS SUBSTANCE which should be handled by trained staff only.

Storage: 4 °C, -20 °C

Storage Comment: RFX3 Antibody (C-term) can be refrigerated at 2-8 °C for up to 6 months. For long term storage, place the at -20 °C.

Expiry Date: 6 months



Western Blotting

Image 1. RFX3 Antibody (C-term) (ABIN656557 and ABIN2845819) western blot analysis in MDA-M cell line lysates (35 µg/lane). This demonstrates the RFX3 antibody detected the RFX3 protein (arrow).