

Datasheet for ABIN656558

anti-eIF4EBP1 antibody (AA 31-61)**3** Images[Go to Product page](#)

Overview

Quantity:	400 µL
Target:	eIF4EBP1 (EIF4EBP1)
Binding Specificity:	AA 31-61
Reactivity:	Human
Host:	Rabbit
Clonality:	Polyclonal
Conjugate:	This eIF4EBP1 antibody is un-conjugated
Application:	Western Blotting (WB), Immunohistochemistry (Paraffin-embedded Sections) (IHC (p)), Flow Cytometry (FACS)

Product Details

Immunogen:	This EIF4EBP1 antibody is generated from rabbits immunized with a KLH conjugated synthetic peptide between 31-61 amino acids from the Central region of human EIF4EBP1.
Clone:	RB11691
Isotype:	Ig Fraction
Predicted Reactivity:	B, M, Rat
Purification:	This antibody is prepared by Saturated Ammonium Sulfate (SAS) precipitation followed by dialysis against PBS.

Target Details

Target:	eIF4EBP1 (EIF4EBP1)
---------	---------------------

Target Details

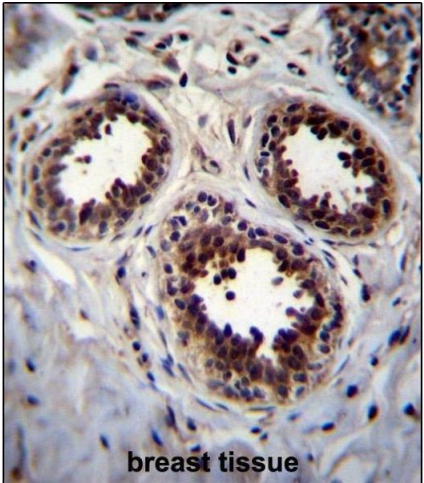
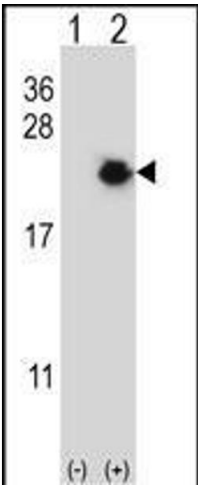
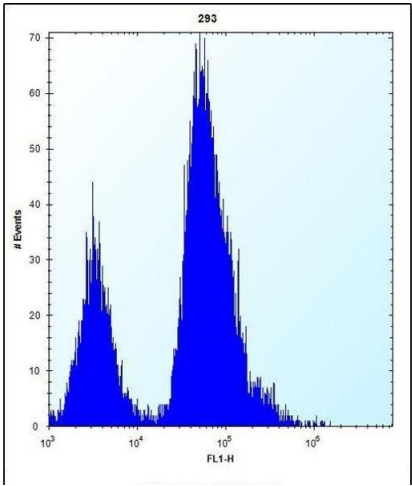
Alternative Name:	EIF4EBP1 (EIF4EBP1 Products)
Background:	This gene encodes one member of a family of translation repressor proteins. The protein directly interacts with eukaryotic translation initiation factor 4E (eIF4E), which is a limiting component of the multisubunit complex that recruits 40S ribosomal subunits to the 5' end of mRNAs. Interaction of this protein with eIF4E inhibits complex assembly and represses translation. This protein is phosphorylated in response to various signals including UV irradiation and insulin signaling, resulting in its dissociation from eIF4E and activation of mRNA translation. [provided by RefSeq].
Molecular Weight:	12580
Gene ID:	1978
NCBI Accession:	NP_004086
UniProt:	Q13541
Pathways:	MAPK Signaling , PI3K-Akt Signaling , RTK Signaling , AMPK Signaling , Regulation of Cell Size , BCR Signaling

Application Details

Application Notes:	WB: 1:1000. IHC-P: 1:10~50. FC: 1:10~50
Restrictions:	For Research Use only

Handling

Format:	Liquid
Buffer:	Purified polyclonal antibody supplied in PBS with 0.09 % (W/V) sodium azide.
Preservative:	Sodium azide
Precaution of Use:	This product contains Sodium azide: a POISONOUS AND HAZARDOUS SUBSTANCE which should be handled by trained staff only.
Storage:	4 °C,-20 °C
Storage Comment:	EIF4EBP1 Antibody (Center) can be refrigerated at 2-8 °C for up to 6 months. For long term storage, place the at -20 °C.
Expiry Date:	6 months



Flow Cytometry

Image 1. EIF4EBP1 Antibody (Center) (ABIN656558 and ABIN2845820) flow cytometric analysis of 293 cells (right histogram) compared to a negative control cell (left histogram). FITC-conjugated goat-anti-rabbit secondary antibodies were used for the analysis.

Western Blotting

Image 2. Western blot analysis of EIF4EBP1 (arrow) using rabbit polyclonal EIF4EBP1 Antibody (Center) (ABIN656558 and ABIN2845820). 293 cell lysates (2 µg/lane) either nontransfected (Lane 1) or transiently transfected (Lane 2) with the EIF4EBP1 gene.

Immunohistochemistry (Paraffin-embedded Sections)

Image 3. EIF4EBP1 Antibody (Center) (ABIN656558 and ABIN2845820) immunohistochemistry analysis in formalin fixed and paraffin embedded human breast tissue followed by peroxidase conjugation of the secondary antibody and DAB staining. This data demonstrates the use of EIF4EBP1 Antibody (Center) for immunohistochemistry. Clinical relevance has not been evaluated.