

Datasheet for ABIN656563

## anti-Claudin 2 antibody (C-Term)



[Go to Product page](#)

### 3 Images

#### Overview

Quantity:	400 µL
Target:	Claudin 2 (CLDN2)
Binding Specificity:	AA 174-201, C-Term
Reactivity:	Human
Host:	Rabbit
Clonality:	Polyclonal
Conjugate:	This Claudin 2 antibody is un-conjugated
Application:	Western Blotting (WB), Flow Cytometry (FACS), Immunohistochemistry (Paraffin-embedded Sections) (IHC (p))

#### Product Details

Immunogen:	This CLDN2 antibody is generated from rabbits immunized with a KLH conjugated synthetic peptide between 174-201 amino acids from the C-terminal region of human CLDN2.
Clone:	RB16645
Isotype:	Ig Fraction
Purification:	This antibody is purified through a protein A column, followed by peptide affinity purification.

#### Target Details

Target:	Claudin 2 (CLDN2)
Alternative Name:	CLDN2 ( <a href="#">CLDN2 Products</a> )

## Target Details

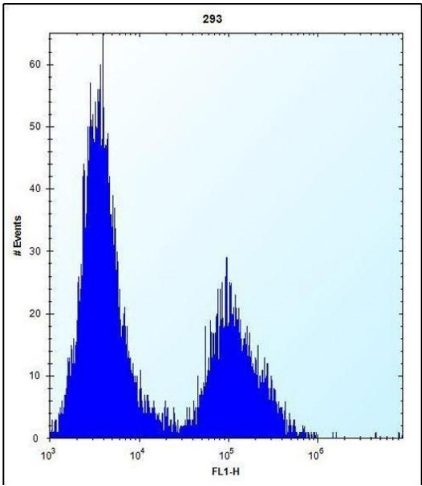
Background:	This gene product belongs to the claudin protein family whose members have been identified as major integral membrane proteins localized exclusively at tight junctions. Claudins are expressed in an organ-specific manner and regulate tissue-specific physiologic properties of tight junctions. This protein is expressed in the intestine. Alternatively spliced transcript variants with different 5' untranslated region have been found for this gene.
Molecular Weight:	24549
Gene ID:	9075
NCBI Accession:	<a href="#">NP_001164563</a> , <a href="#">NP_001164566</a> , <a href="#">NP_065117</a>
UniProt:	<a href="#">P57739</a>
Pathways:	<a href="#">Hepatitis C</a>

## Application Details

Application Notes:	WB: 1:1000. IHC-P: 1:10~50. FC: 1:10~50
Restrictions:	For Research Use only

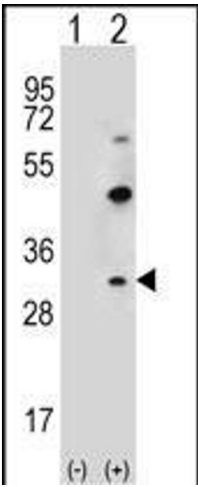
## Handling

Format:	Liquid
Buffer:	Purified polyclonal antibody supplied in PBS with 0.09 % (W/V) sodium azide.
Preservative:	Sodium azide
Precaution of Use:	This product contains Sodium azide: a POISONOUS AND HAZARDOUS SUBSTANCE which should be handled by trained staff only.
Storage:	4 °C, -20 °C
Storage Comment:	CLDN2 Antibody (C-term Y195) can be refrigerated at 2-8 °C for up to 6 months. For long term storage, place the at -20 °C.
Expiry Date:	6 months



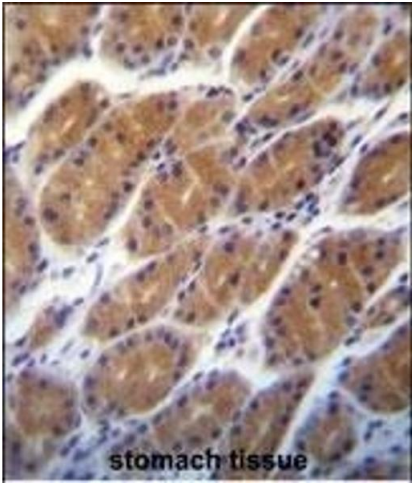
### Flow Cytometry

**Image 1.** CLDN2 Antibody (C-term ) (ABIN656563 and ABIN2845823) flow cytometric analysis of 293 cells (right histogram) compared to a negative control cell (left histogram). FITC-conjugated goat-anti-rabbit secondary antibodies were used for the analysis.



### Western Blotting

**Image 2.** Western blot analysis of CLDN2 (arrow) using rabbit polyclonal CLDN2 Antibody (ABIN656563 and ABIN2845823). 293 cell lysates (2 µg/lane) either nontransfected (Lane 1) or transiently transfected (Lane 2) with the CLDN2 gene.



### Immunohistochemistry (Paraffin-embedded Sections)

**Image 3.** CLDN2 Antibody (C-term ) (ABIN656563 and ABIN2845823) immunohistochemistry analysis in formalin fixed and paraffin embedded human stomach tissue followed by peroxidase conjugation of the secondary antibody and DAB staining. This data demonstrates the use of CLDN2 Antibody (C-term ) for immunohistochemistry. Clinical relevance has not been evaluated.