

Datasheet for ABIN656574
anti-CA1 antibody (N-Term)

3 Images

[Go to Product page](#)

Overview

Quantity:	400 µL
Target:	CA1
Binding Specificity:	AA 60-90, N-Term
Reactivity:	Human
Host:	Rabbit
Clonality:	Polyclonal
Conjugate:	This CA1 antibody is un-conjugated
Application:	Western Blotting (WB), Immunohistochemistry (Paraffin-embedded Sections) (IHC (p)), Flow Cytometry (FACS)

Product Details

Immunogen:	This CA1 antibody is generated from rabbits immunized with a KLH conjugated synthetic peptide between 60-90 amino acids from the N-terminal region of human CA1.
Clone:	RB18358
Isotype:	Ig Fraction
Purification:	This antibody is prepared by Saturated Ammonium Sulfate (SAS) precipitation followed by dialysis against PBS.

Target Details

Target:	CA1
Alternative Name:	CA1 (CA1 Products)

Target Details

Background: Carbonic anhydrases (CAs) are a large family of zinc metalloenzymes that catalyze the reversible hydration of carbon dioxide. They participate in a variety of biological processes, including respiration, calcification, acid-base balance, bone resorption, and the formation of aqueous humor, cerebrospinal fluid, saliva, and gastric acid. They show extensive diversity in tissue distribution and in their subcellular localization. CA1 is closely linked to CA2 and CA3 genes on chromosome 8, and it encodes a cytosolic protein which is found at the highest level in erythrocytes. Variants of this gene have been described in some populations. Multiple alternatively spliced variants, encoding the same protein, have been identified. Transcript variants of CA1 utilizing alternative polyA_sites have been described in literature.

Molecular Weight: 28870

Gene ID: 759

NCBI Accession: [NP_001122301](#), [NP_001122302](#), [NP_001122303](#), [NP_001158302](#), [NP_001729](#)

UniProt: [P00915](#)

Application Details

Application Notes: WB: 1:1000. IHC-P: 1:10~50. FC: 1:10~50

Restrictions: For Research Use only

Handling

Format: Liquid

Buffer: Purified polyclonal antibody supplied in PBS with 0.09 % (W/V) sodium azide.

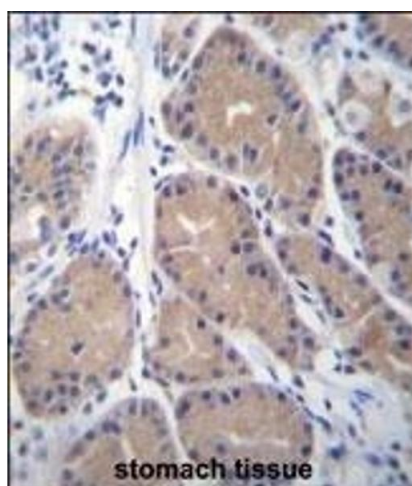
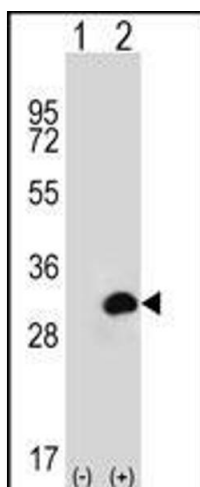
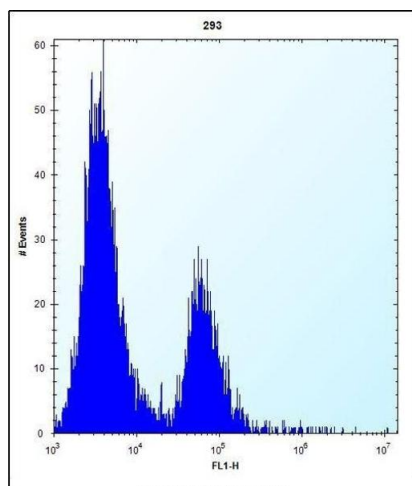
Preservative: Sodium azide

Precaution of Use: This product contains Sodium azide: a POISONOUS AND HAZARDOUS SUBSTANCE which should be handled by trained staff only.

Storage: 4 °C, -20 °C

Storage Comment: CA1 Antibody (N-term) can be refrigerated at 2-8 °C for up to 6 months. For long term storage, place the at -20 °C.

Expiry Date: 6 months



Flow Cytometry

Image 1. CA1 Antibody (N-term) (ABIN656574 and ABIN2845835) flow cytometric analysis of HE cells (right histogram) compared to a negative control cell (left histogram). FITC-conjugated goat-anti-rabbit secondary antibodies were used for the analysis.

Western Blotting

Image 2. Western blot analysis of CA1 (arrow) using rabbit polyclonal CA1 Antibody (N-term) (ABIN656574 and ABIN2845835). HE cell lysates (2 µg/lane) either nontransfected (Lane 1) or transiently transfected (Lane 2) with the CA1 gene.

Immunohistochemistry (Paraffin-embedded Sections)

Image 3. CA1 Antibody (N-term) (ABIN656574 and ABIN2845835) immunohistochemistry analysis in formalin fixed and paraffin embedded human stomach tissue followed by peroxidase conjugation of the secondary antibody and DAB staining. This data demonstrates the use of CA1 Antibody (N-term) for immunohistochemistry. Clinical relevance has not been evaluated.