

Datasheet for ABIN656585

anti-PLOD1 antibody (N-Term)

7 Images

3 Publications

[Go to Product page](#)

Overview

Quantity:	400 µL
Target:	PLOD1
Binding Specificity:	AA 66-94, N-Term
Reactivity:	Human
Host:	Rabbit
Clonality:	Polyclonal
Conjugate:	This PLOD1 antibody is un-conjugated
Application:	Western Blotting (WB), Flow Cytometry (FACS), Immunohistochemistry (Paraffin-embedded Sections) (IHC (p))

Product Details

Immunogen:	This PLOD1 antibody is generated from rabbits immunized with a KLH conjugated synthetic peptide between 66-94 amino acids from the N-terminal region of human PLOD1.
Clone:	RB30211
Isotype:	Ig Fraction
Predicted Reactivity:	M
Purification:	This antibody is purified through a protein A column, followed by peptide affinity purification.

Target Details

Target:	PLOD1
---------	-------

Target Details

Alternative Name:	PLOD1 (PLOD1 Products)
Background:	Lysyl hydroxylase is a membrane-bound homodimeric protein localized to the cisternae of the endoplasmic reticulum. The enzyme (cofactors iron and ascorbate) catalyzes the hydroxylation of lysyl residues in collagen-like peptides. The resultant hydroxylysyl groups are attachment sites for carbohydrates in collagen and thus are critical for the stability of intermolecular crosslinks. Some patients with Ehlers-Danlos syndrome type VI have deficiencies in lysyl hydroxylase activity.
Molecular Weight:	83550
Gene ID:	5351
NCBI Accession:	NP_000293
UniProt:	Q02809

Application Details

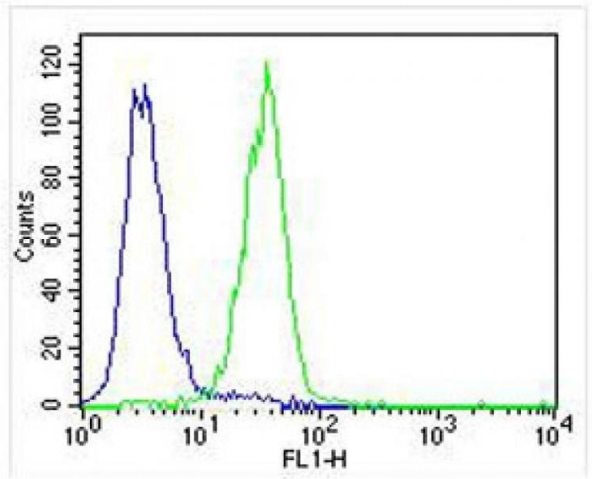
Application Notes:	WB: 1:1000. WB: 1:1000. WB: 1:1000-1:2000. WB: 1:2000. IHC-P: 1:25. IHC-P: 1:10~50. FC: 1:25
Restrictions:	For Research Use only

Handling

Format:	Liquid
Buffer:	Purified polyclonal antibody supplied in PBS with 0.09 % (W/V) sodium azide.
Preservative:	Sodium azide
Precaution of Use:	This product contains Sodium azide: a POISONOUS AND HAZARDOUS SUBSTANCE which should be handled by trained staff only.
Storage:	4 °C,-20 °C
Storage Comment:	PLOD1 Antibody (N-term) can be refrigerated at 2-8 °C for up to 6 months. For long term storage, place the at -20 °C.
Expiry Date:	6 months

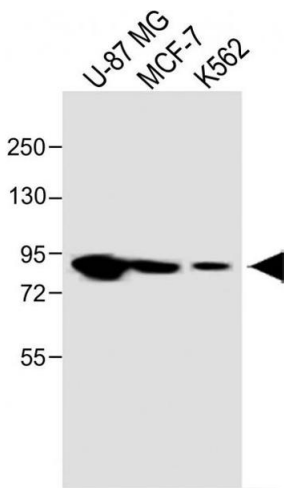
Publications

Product cited in:	Wang, Wu, Zhou, Guo, Zheng, Wang, Bi, Liu, Zhou, Guo, Sha: "Mapping of the N-linked glycoproteome of human spermatozoa." in: Journal of proteome research , Vol. 12, Issue 12,
-------------------	---



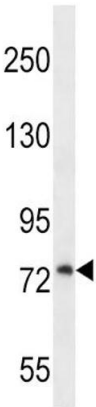
Flow Cytometry

Image 1. Overlay histogram showing U-87 MG cells stained with (ABIN656585 and ABIN2845847) (green line). The cells were fixed with 2 % paraformaldehyde (10 min) and then permeabilized with 90 % methanol for 10 min. The cells were then incubated in 2 % bovine serum albumin to block non-specific protein-protein interactions followed by the antibody ((ABIN656585 and ABIN2845847), 1:25 dilution) for 60 min at 37 °C. The secondary antibody used was Goat Anti-Rabbit IgG, DyLight® 488 Conjugated Highly Cross-Adsorbed(NA168821)) at 1/400 dilution for 40 min at 37 °C. Isotype control antibody (blue line) was mouse IgG1 (1 µg/1x10⁶ cells) used under the same conditions. Acquisition of >10,000 events was performed.



Western Blotting

Image 2. All lanes : PLOD1 Antibody (N-term) at 1:1000 dilution Lane 1: U-87 MG whole cell lysate Lane 2: MCF-7 whole cell lysate Lane 3: K562 whole cell lysate Lysates/proteins at 20 µg per lane. Secondary Goat Anti-Rabbit IgG, (H+L), Peroxidase conjugated (AS) at 1/10000 dilution. Observed band size :90 kDa Blocking/Dilution buffer: 5 % NFDM/TBST.



Western Blotting

Image 3. PLOD1 Antibody (N-term) (ABIN656585 and ABIN2845847) western blot analysis in cell line lysates (35 μ g/lane). This demonstrates the PLOD1 antibody detected the PLOD1 protein (arrow).

Please check the [product details page](#) for more images. Overall 7 images are available for ABIN656585.