

Datasheet for ABIN656586  
**anti-IREB2 antibody (AA 201-230)**[Go to Product page](#)

## 3 Images

## Overview

Quantity:	400 µL
Target:	IREB2
Binding Specificity:	AA 201-230
Reactivity:	Human
Host:	Rabbit
Clonality:	Polyclonal
Application:	Western Blotting (WB), Flow Cytometry (FACS), Immunohistochemistry (Paraffin-embedded Sections) (IHC (p))

## Product Details

Immunogen:	This IREB2 antibody is generated from rabbits immunized with a KLH conjugated synthetic peptide between 201-230 amino acids from the Central region of human IREB2.
Clone:	RB30212
Isotype:	Ig Fraction
Predicted Reactivity:	M, Pig, Rat
Purification:	This antibody is purified through a protein A column, followed by peptide affinity purification.

## Target Details

Target:	IREB2
Alternative Name:	IREB2 ( <a href="#">IREB2 Products</a> )

## Target Details

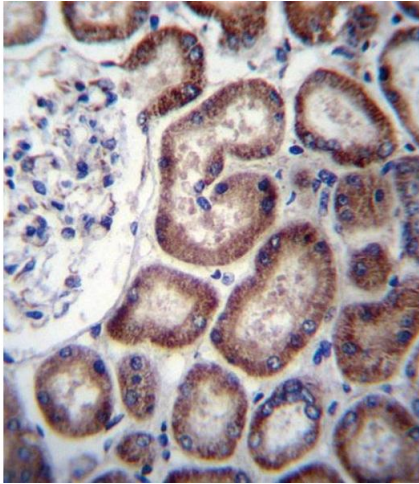
Background:	IREB2 is a RNA-binding protein that binds to iron-responsive elements (IRES), which are stem-loop structures found in the 5'-UTR of ferritin, and delta aminolevulinic acid synthase mRNAs, and in the 3'-UTR of transferrin receptor mRNA. Binding to the IRE element in ferritin results in the repression of its mRNA translation. Binding of the protein to the transferrin receptor mRNA inhibits the degradation of this otherwise rapidly degraded mRNA.
Molecular Weight:	105059
Gene ID:	3658
NCBI Accession:	<a href="#">NP_004127</a>
UniProt:	<a href="#">P48200</a>
Pathways:	<a href="#">Transition Metal Ion Homeostasis</a>

## Application Details

Application Notes:	WB: 1:1000. IHC-P: 1:10~50. FC: 1:10~50
Restrictions:	For Research Use only

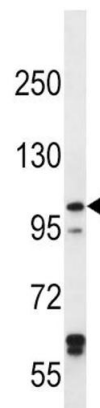
## Handling

Format:	Liquid
Buffer:	Purified polyclonal antibody supplied in PBS with 0.09 % (W/V) sodium azide.
Preservative:	Sodium azide
Precaution of Use:	This product contains Sodium azide: a POISONOUS AND HAZARDOUS SUBSTANCE which should be handled by trained staff only.
Storage:	4 °C, -20 °C
Storage Comment:	IREB2 Antibody (Center) can be refrigerated at 2-8 °C for up to 6 months. For long term storage, place the at -20 °C.
Expiry Date:	6 months



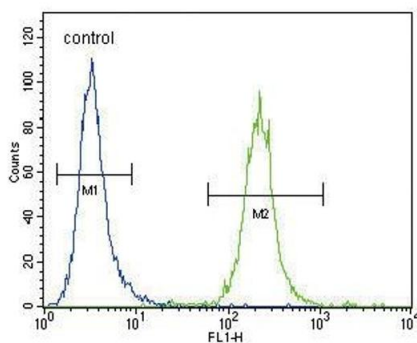
### Immunohistochemistry (Paraffin-embedded Sections)

**Image 1.** IREB2 Antibody (Center) (ABIN656586 and ABIN2845848) immunohistochemistry analysis in formalin fixed and paraffin embedded human kidney tissue followed by peroxidase conjugation of the secondary antibody and DAB staining. This data demonstrates the use of IREB2 Antibody (Center) for immunohistochemistry. Clinical relevance has not been evaluated.



### Western Blotting

**Image 2.** IREB2 Antibody (Center) (ABIN656586 and ABIN2845848) western blot analysis in HeLa cell line lysates (35 µg/lane). This demonstrates the IREB2 antibody detected the IREB2 protein (arrow).



### Flow Cytometry

**Image 3.** IREB2 Antibody (Center) (ABIN656586 and ABIN2845848) flow cytometric analysis of HeLa cells (right histogram) compared to a negative control cell (left histogram). FITC-conjugated goat-anti-rabbit secondary antibodies were used for the analysis.